

Cable Car (kunanyi/Mount Wellington) Facilitation Act 2017 (Tas)

Section 7 – Amendment to authority to enter land (Access Zone)

I, **THE HONOURABLE PETER CARL GUTWEIN MP**, (being and in my capacity as the Minister administering the *Cable Car (kunanyi/Mount Wellington) Facilitation Act 2017 (the Act)*), by an authority dated 11 February 2019 (**the Authority**), granted to the Proponent and each Authorised Person (when acting on behalf of the Proponent) an authority to enter the Site and public land within Wellington Park, and to carry out authorised activities in relation to the Site.

I hereby amend the Authority by omitting from Column 2 of Row 1 of Attachment 1 “terminal building envelope” and substituting “road alignment”.

Definitions and interpretation

1. In this instrument:

Authorised Person means the following persons, and their officers and employees, when carrying out an Authorised Activity on behalf of the Proponent:

- (a) the Proponent;
- (b) Vos Constructions and Joinery Pty Ltd;
- (c) 1 + 2 Architecture Pty Ltd;
- (d) Jacob Allom Wade Pty Ltd;
- (e) Hansen Partnership Pty Ltd;
- (f) Gandy and Roberts Pty Ltd;
- (g) GHD Pty Ltd;
- (h) Doppelmayer Australia Pty Ltd;
- (i) Leary & Cox Pty Ltd;
- (j) Dirt Art Pty Ltd;
- (k) Aerial Vision Australia Pty Ltd;
- (l) Pitt & Giblin Pty Ltd;
- (m) Veris Limited;
- (n) Cardno Limited;
- (o) Drilling & Coring Pty Ltd (trading as KMR Drilling);
- (p) North Barker Ecosystem Services Pty Ltd; and
- (q) Helicopter Resources (Tasmania) Pty Ltd.

Proponent means the Mount Wellington Cableway Company Pty Ltd (ACN 607 312 532).

Site means the area marked in yellow in Annexure A.

Wellington Park has the same meaning as in the *Wellington Park Act 1993* (Tas).

2. In this instrument:

- (a) the plural includes the singular and vice versa;
- (b) a reference to any gender includes all genders; and
- (c) other parts of speech and grammatical forms of a word or phrase defined in this instrument have a corresponding meaning.

3. In this instrument, where an area or location is defined by reference to an image in an Annexure and geo-spatial co-ordinates, the geo-spatial co-ordinates prevail over the image in the event of any inconsistency.

Dated: 14.2.19

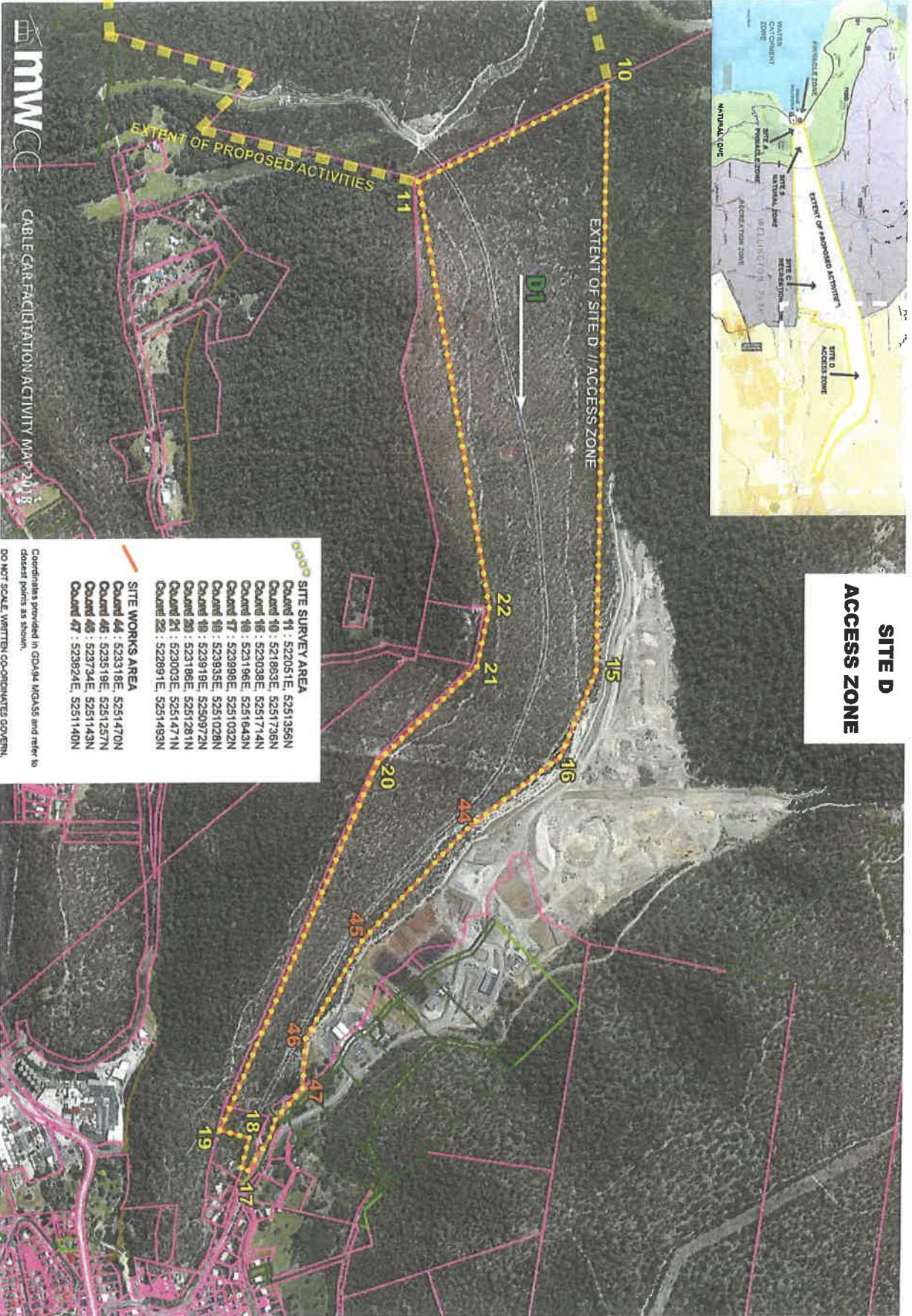


THE HONOURABLE PETER CARL GUTWEIN MP
Minister for State Growth

Annexure A - Site



**SITE D
ACCESS ZONE**



mmw
CABLE CAR FACILITATION ACTIVITY MAP 2018

SITE SURVEY AREA

Control 11	: 522051E, 5251355N
Control 10	: 521863E, 5251736N
Control 15	: 523038E, 5251714N
Control 16	: 523198E, 5251643N
Control 17	: 523998E, 5251032N
Control 18	: 523935E, 5251028N
Control 19	: 523919E, 5250972N
Control 20	: 523186E, 5251281N
Control 21	: 523003E, 5251471N
Control 22	: 522891E, 5251483N

SITE WORKS AREA

Control 44	: 523318E, 5251470N
Control 45	: 523519E, 5251257N
Control 46	: 523734E, 5251143N
Control 47	: 523924E, 5251140N

Coordinates provided in GDA04 MGA55 and refer to closest points as shown.
DO NOT SCALE. WRITTEN CO-ORDINATES GOVERN.