

EXPRESSION OF INTEREST CATALOGUE

Giant sequoias



City of **HOBART**



Carving art from fallen city giants

The City of Hobart invites Expressions of Interest (EOIs) from artists, makers and community groups to utilise timber sourced from two giant sequoia trees.

This initiative supports creative and community-focused projects that respectfully engage with this unique material.

Successful applicants will be responsible for the collection, transport and use of the timber, as well as reporting project outcomes to the City of Hobart within one to two years.

The giant sequoia (*Sequoiadendron giganteum*) is a tree species with a deep cultural legacy. Native to America, it is named Sequoia after a Cherokee chief. Giant sequoias can live for thousands of years.

The two giant sequoias fell into decline in 2025 and removed from St David's Park after repeated attempts to revive them failed.

The trees are listed on the National Trust Register as specimens of State Significance.

We acknowledge the significance of the sequoia tree species to First Nations people from where these trees are from and seek to honour the lives of these trees by repurposing every piece of wood. These trees have witnessed a changing landscape as Hobart has grown around them, carrying stories from other places that connect with us here.

We acknowledge our city, and the trees that grow within it, is all part of Nipaluna, Palawa Country.

Lutruwita (Tasmania) is known for its artists and designers, and there are many skilled makers across these islands who create beautiful objects and artworks from the wood grown across the state. The wood from these giant sequoias ranges from deep red to earthy pinks and pale yellows. It was historically used for its resistance to fire and rot. This EOI process represents a rare opportunity for artists, designers and makers in Lutruwita (Tasmania) to access large whole unmilled pieces of wood and a range of character filled branches for free to use in ambitious creative and community projects.

For makers who prefer to work with milled wood, we have included a store of milled elm timber from a mature tree in Franklin Square that was sadly vandalised and subsequently removed in 2005. The wood from the tree was milled and has been stacked and stored undercover since this time.



N°	Type	Diameter at base	Diameter at top (mm)	Length (m)	Notes
T3	Trunk	1550	950	8.1	Significant amount of knots



N°	Type	Diameter at base	Diameter at top (mm)	Length (m)	Notes
T4	Trunk	1300	850	7.1	Knots



N°	Type	Diameter at base	Diameter at top (mm)	Length (m)	Notes
T5	Trunk	900	600	7.1	Knots, straight



N°	Type	Diameter at base	Diameter at top (mm)	Length (m)	Notes
T6	Trunk	900	550	5.3	Knots, straight



N°	Type	Diameter at base	Diameter at top (mm)	Length (m)	Notes
----	------	------------------	----------------------	------------	-------

T7	Trunk	550	350	6.8	Knots, straight
----	-------	-----	-----	-----	-----------------



N°	Type	Diameter at base	Diameter at top (mm)	Length (m)	Notes
T8	Trunk	550	380	4.7	Knots, bend



N°	Type	Diameter at base	Diameter at top (mm)	Length (m)	Notes
----	------	------------------	----------------------	------------	-------

T9	Trunk	400	300	1.7	Top end of trunk
----	-------	-----	-----	-----	------------------



N°	Type	Diameter at base	Diameter at top (mm)	Length (m)	Notes
T10	Trunk	290	330	1.45	Top end of trunk



N°	Type	Diameter at base	Diameter at top (mm)	Length (m)	Notes
T11	Trunk	260	240	1.62	Top end of trunk



N°	Type	Diameter at base	Diameter at top (mm)	Length (m)	Notes
T12	Trunk	200	300	1.05	Top end of trunk, split off at top



N°	Type	Diameter at base	Diameter at top (mm)	Length (m)	Notes
----	------	------------------	----------------------	------------	-------

L1	Limb	360	180	1.2	Bulbous end
----	------	-----	-----	-----	-------------



N°	Type	Diameter at base	Diameter at top (mm)	Length (m)	Notes
L2	Limb	200	150	1.6	Bend



N°	Type	Diameter at base	Diameter at top (mm)	Length (m)	Notes
L3	Limb	360	180	1.2	Bulbous end



N°	Type	Diameter at base	Diameter at top (mm)	Length (m)	Notes
L4	Limb	280	180	2.1	Curved



N°	Type	Diameter at base	Diameter at top (mm)	Length (m)	Notes
----	------	------------------	----------------------	------------	-------

L5	Limb	250	150	2.3	Curved
----	------	-----	-----	-----	--------



N°	Type	Diameter at base	Diameter at top (mm)	Length (m)	Notes
L6	Limb	280	180	1.9	Curved



N°	Type	Diameter at base	Diameter at top (mm)	Length (m)	Notes
----	------	------------------	----------------------	------------	-------

L7	Limb	180	120	1.8	Knots
----	------	-----	-----	-----	-------



N°	Type	Diameter at base	Diameter at top (mm)	Length (m)	Notes
L8	Limb	220	180	1.6	Knots



N°	Type	Diameter at base	Diameter at top (mm)	Length (m)	Notes
L9	Limb	170	160	2.2	Bends



N°	Type	Diameter at base	Diameter at top (mm)	Length (m)	Notes
L10	Limb	280	130	1.9	



N°	Type	Diameter at base	Diameter at top (mm)	Length (m)	Notes
L11	Limb	130	100	1.2	Curved



N°	Type	Diameter at base	Diameter at top (mm)	Length (m)	Notes
L12	Limb	150	120	1	Curved



N°	Type	Diameter at base	Diameter at top (mm)	Length (m)	Notes
----	------	------------------	----------------------	------------	-------

L13	Limb	160	150	0.7	
-----	------	-----	-----	-----	--



N°	Type	Diameter at base	Diameter at top (mm)	Length (m)	Notes
L14	Limb	200	130	0.65	



N°	Type	Diameter at base	Diameter at top (mm)	Length (m)	Notes
L15	Limb	160	150	1.5	Knots



N°	Type	Diameter at base	Diameter at top (mm)	Length (m)	Notes
L16	Limb	170	170	2	Straight



N°	Type	Diameter at base	Diameter at top (mm)	Length (m)	Notes
L17	Limb	200	200	1.5	Straight



N°	Type	Diameter at base	Diameter at top (mm)	Length (m)	Notes
L18	Limb	150	100	2.8	Bent



N°	Type	Diameter at base	Diameter at top (mm)	Length (m)	Notes
----	------	------------------	----------------------	------------	-------

L18	Limb	150	100	2.8	Bent
-----	------	-----	-----	-----	------



N°	Type	Diameter at base	Diameter at top (mm)	Length (m)	Notes
L19	Limb	260	170	2.5	Bends



N°	Type	Diameter at base	Diameter at top (mm)	Length (m)	Notes
----	------	------------------	----------------------	------------	-------

L20	Limb	190	160	2.1	Bends
-----	------	-----	-----	-----	-------



N°	Type	Diameter at base	Diameter at top (mm)	Length (m)	Notes
L21	Limb	230	170	2.7	Bends



N°	Type	Diameter at base	Diameter at top (mm)	Length (m)	Notes
----	------	------------------	----------------------	------------	-------

L22	Limb	180	180	1.9	Straight
-----	------	-----	-----	-----	----------



N°	Type	Diameter at base	Diameter at top (mm)	Length (m)	Notes
L23	Limb	160	120	2.1	Curved



N°	Type	Diameter at base	Diameter at top (mm)	Length (m)	Notes
----	------	------------------	----------------------	------------	-------

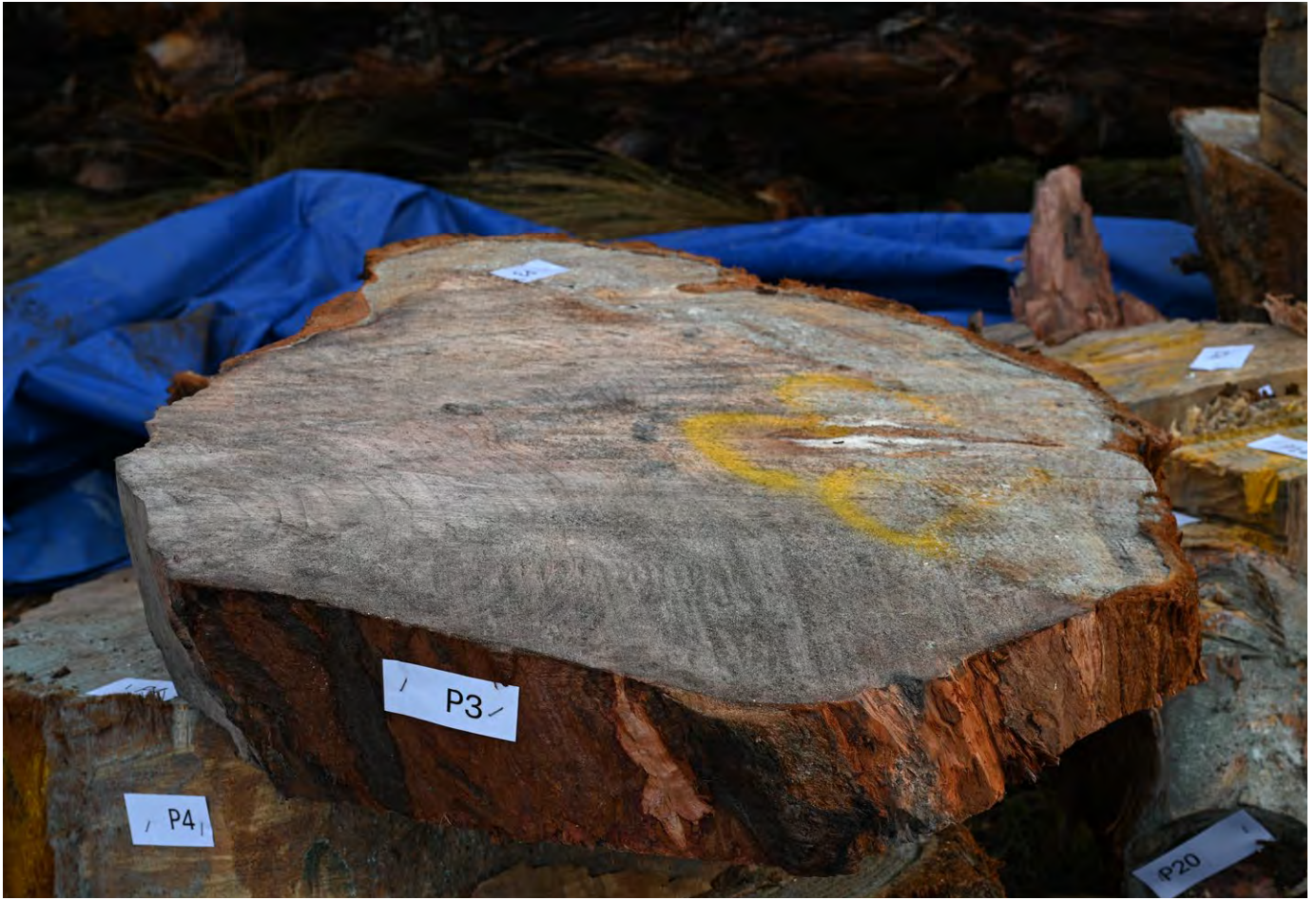
L24	Limb	200	150	2.6	Curved
-----	------	-----	-----	-----	--------



N°	Type	Diameter at base	Diameter at top (mm)	Length (m)	Notes
P1	Piece	550	350	450	Cut out from trunk, under L2



N°	Type	Diameter at base	Diameter at top (mm)	Length (m)	Notes
P2	Piece	450	400	200	Under L3



N°	Type	Diameter at base	Diameter at top (mm)	Length (m)	Notes
----	------	------------------	----------------------	------------	-------

P3	Piece	800	700	120	Biscuit
----	-------	-----	-----	-----	---------



N°	Type	Diameter at base	Diameter at top (mm)	Length (m)	Notes
P4	Piece	600	1200	500	Biscuit



N°	Type	Diameter at base	Diameter at top (mm)	Length (m)	Notes
P5	Piece	1000	600	400	Quarter biscuit



N°	Type	Diameter at base	Diameter at top (mm)	Length (m)	Notes
P6	Piece	1100	600	250	Biscuit



N°	Type	Diameter at base	Diameter at top (mm)	Length (m)	Notes
----	------	------------------	----------------------	------------	-------

P7	Piece	700	350	250	Notch
----	-------	-----	-----	-----	-------



N°	Type	Diameter at base	Diameter at top (mm)	Length (m)	Notes
P8	Piece	450	400	350	Notch



N°	Type	Diameter at base	Diameter at top (mm)	Length (m)	Notes
P9	Piece	400	400	350	Notch



N°	Type	Diameter at base	Diameter at top (mm)	Length (m)	Notes
P10	Piece	300	600	450	Hinge piece



N°	Type	Diameter at base	Diameter at top (mm)	Length (m)	Notes
----	------	------------------	----------------------	------------	-------

P11	Piece	400	400	200	Notch, wedge shape
-----	-------	-----	-----	-----	--------------------



N°	Type	Diameter at base	Diameter at top (mm)	Length (m)	Notes
P12	Piece	800	400	300	Hinge piece



N°	Type	Diameter at base	Diameter at top (mm)	Length (m)	Notes
----	------	------------------	----------------------	------------	-------

P13	Piece	350	150	350	Notch
-----	-------	-----	-----	-----	-------



N°	Type	Diameter at base	Diameter at top (mm)	Length (m)	Notes
P14	Piece	150	550	120	Notch



N°	Type	Diameter at base	Diameter at top (mm)	Length (m)	Notes
----	------	------------------	----------------------	------------	-------

P15	Piece	380	130	210	Notch
-----	-------	-----	-----	-----	-------



N°	Type	Diameter at base	Diameter at top (mm)	Length (m)	Notes
P16	Piece	400	300	100	Biscuit



N°	Type	Diameter at base	Diameter at top (mm)	Length (m)	Notes
----	------	------------------	----------------------	------------	-------

P17	Piece	800	450	500	Biscuit
-----	-------	-----	-----	-----	---------



N°	Type	Diameter at base	Diameter at top (mm)	Length (m)	Notes
P18	Piece	1200	500	500	Biscuit



N°	Type	Diameter at base	Diameter at top (mm)	Length (m)	Notes
----	------	------------------	----------------------	------------	-------

P19	Piece	500	250	800	Biscuit
-----	-------	-----	-----	-----	---------



N°	Type	Diameter at base	Diameter at top (mm)	Length (m)	Notes
P20	Piece	250	250	120	Base of limb

ELM: MILL



ED TIMBER





ELM TIMBER AVAILABLE

Pallet 1	31 pieces of milled elm timber	Approximately 1.0m in length, ranging from 0.5m to 1.0m wide, approximately 40mm thick.
Pallet 2	33 pieces of milled elm timber	Approximately 1.7m in length, ranging from 0.2m to 0.7m wide, approximately 25mm-40mm thick.
Pallet 3	29 pieces of milled elm timber	Approximately 1.0m in length, ranging from 0.04m to 0.2m wide, approximately 25mm thick.
Pallet 4	67 pieces of milled elm timber	Approximately 0.4m to 0.8m in length, ranging from 0.04m – 0.2m wide, approximately 25mm thick.
	34 pieces of milled elm timber	Approximately 1.0m in length and 0.4m wide, milled to a thin veneer of approximately 8mm thick.





Hobart Town Hall,
Macquarie Street,
Hobart,
Tasmania 7000 Australia
t (03) 6238 2711
f (03) 6238 2186
e coh@hobartcity.com.au
w hobartcity.com.au