













The End of Term Report is a concise summary that provides the community and stakeholders with an overview of key achievements during this term of the Hobart City Council.

Some key facts about Hobart, the city and the local government area, that have an impact on people's lives and the economy.

POPULATION (Estimate Resident Population)	MEDIAN AGE	PEOPLE WHO IDENTIFY AS ABORIGINAL OR TORRES STRAIT ISLANDER	PEOPLE BORN OVERSEAS
54,599 in 2018 56,084 in 2021 an increase of 2.7 per cent since 2018 	39 years in 2016 37 years in 2021 	708 or 1.4 per cent of population in 2016 870 or 1.6 per cent of population in 2021 	22.7 per cent of residents born overseas in 2016 28.6 per cent of residents born overseas in 2021 
AVERAGE NUMBER OF PEOPLE PER HOUSEHOLD	MEDIAN WEEKLY HOUSEHOLD INCOME	MEDIAN MONTHLY MORTGAGE PAYMENTS	MEDIAN WEEKLY RENT
2.21 in 2016 2.3 in 2021 	\$1,439 in 2016 \$1,842 in 2021 	\$1,520 in 2016 \$1,800 in 2021 	\$290 in 2016 \$390 in 2021 
GROSS REGIONAL PRODUCT	LOCAL REGISTERED BUSINESSES	VALUE OF ALL PLANNING APPROVALS	
\$7.3 billion in 2018 \$8.3 billion in 2021 Growth of 12.8 per cent 	6,251 in 2019 6,747 in 2021 	In 2020-21 the Health Care and Social Assistance industry continued to be the largest employing industry with 12,396 local jobs or 19 per cent of all employment. 	
		2018 – 19 - \$302m 2019 – 20 - \$295m 2020 – 21 - \$330m 2021 – 22 - \$305m 	

Our Mission: Working together to make Hobart a better place for the community.

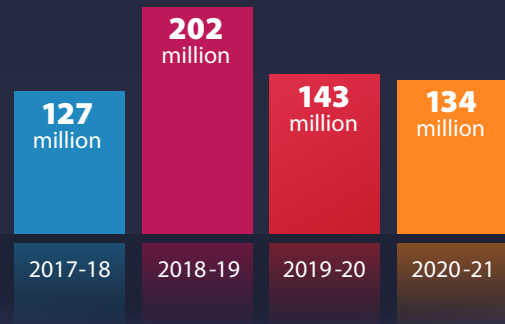
REPORTING ON PERFORMANCE 2018–2022

Indicators showing the City of Hobart's financial performance

TOTAL INCOME



TOTAL EXPENDITURE



RATES

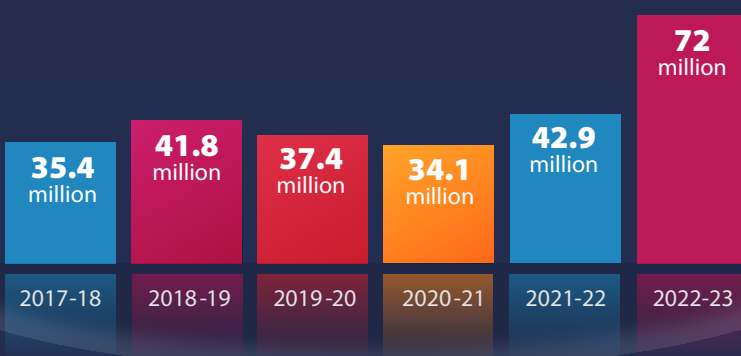
Total rateable properties in 2022: **25,019**
a **2.4 per cent increase** since 2017-18.

Non-residential rateable properties make up **13 per cent of total** rateable properties.

RATE INCREASES

2017 - 18	3.25%
2018 - 19	2.00%
2019 - 20	3.25%
2020 - 21	0%
2021 - 22	2.73%
2022 - 23	2.27%

CAPITAL WORKS BUDGET



UNDERLYING BUDGET SURPLUS/DEFICIT

2017 - 18	\$3.695 million surplus
2018 - 19	\$1.246 million surplus
2019 - 20	-\$9.317 million deficit
2020 - 21	-\$0.025 deficit

FINANCIAL ASSISTANCE GRANTS

(from the Commonwealth Government)

2017 - 18	\$2.738 million
2018 - 19	\$2.824 million
2019 - 20	\$2.746 million
2020 - 21	\$2.861 million

CITY-OWNED ASSETS

- \$2 billion+ in physical assets.
- Expected life of between 3 to 150 years.

Longer life assets – roads and bridges, stormwater, buildings and parks and sporting facilities account for 90 per cent of the value of City-owned assets.

CAPITAL GRANTS

(from the State and Commonwealth Governments)

2017 - 18	\$3.502 million
2018 - 19	\$1.459 million
2019 - 20	\$2.208 million
2020 - 21	\$2.402 million

ACHIEVEMENTS

MAJOR PROJECTS

- Lenah Valley Retail Precinct upgrade.
- Bridge of Remembrance.
- New Town Retail Precinct upgrade stage 1.
- Rose Garden Bridge
- Salamanca Place Precinct upgrade stages 1 and 2.
- Completion of the Great Short Walk project - Organ Pipes and Pinnacle tracks opened.
- Doone Kennedy Hobart Aquatic Centre - leisure pool refurbishment and new kids pool.



Bridge of Remembrance

ECONOMY

- Elizabeth Mall Information Booth upgrade.
- COVID-19 Economic Recovery Framework developed.
- Business Consultative Group established.
- Passport to Hobart campaigns to support COVID-19 recovery in hospitality sector.
- Outdoor dining platform trial in Midtown.
- Business concierge established.
- Industry roundtables held.
- Tasmania's Own Market – interim and smaller market held during COVID-19 restrictions.



Volunteers at Tasmania's Own Market

ROADS, TRANSPORT & PARKING

- Pedestrian signals installed Elboden Street / Macquarie St South Hobart.
- Roll out of the Integrated Parking System and on-street parking meters.
- Elizabeth Street Bus Mall improvements.
- 40 km/hour speed limit change in CBD.
- Over 84, 000 EasyPark app subscribers.
- 50 per cent of parking meter transactions are via the EasyPark app.
- Digital bus shelter design competition.
- Series of uphill passing lanes on Huon Road completed.
- Fast-charge electric vehicle station was installed at the Dunn Place carpark with two planned by August 2022.
- kunanyi/Mt Wellington bus service introduced.
- River Derwent Ferry, from Bellerive to Hobart introduced as part of the Hobart City Deal.



River Derwent Ferry

PLANNING APPROVALS

- 70 major developments approved with a value of over \$750 million.
- 1,068 additional hotel rooms since 2017.
- Planning approved for 14 inner city residential apartment buildings between 2018 and 2021 – potentially 486 dwellings.



The Commons, Bathurst Street, Hobart

EVENTS AND ARTS PROJECTS SUPPORTED BY CITY OF HOBART

- Busking and Street Performance Program.
- Community Christmas and Carol Events.
- NYE fireworks.
- **Events supported and sponsored by the City** – Dark Mofo, Mona Foma, Festival of Voices, Taste of Summer, Ten Days on the Island, the Wooden Boat Festival, the Antarctic Festival and many more.



Arts projects supported by the City

- Two Islands public art in Franklin Square completed.
- Crowther Reinterpreted truth-telling project.
- The Loop outdoor screen installed in Midtown.
- Inaugural Hobart Current held in 2020.
- City Pilots commenced.
- Ability to Create delivered
- 6 Storeys 6 Stories – Argyle Street Car Park delivered

CITY OF HOBART GRANT FUNDING PROGRAM ALLOCATIONS

2017-18	\$1.03 million
2018-19	\$1.05 million
2019-20	\$1.44 million
2020-21	\$1.21 million
2021-22	\$1.26 million

The average return on investment for the 2021-22 grants allocation was \$4.67; that is for every dollar provided \$4.67 was generated in the community.

SPORTS, RECREATION AND PARKS

- Legacy Park completed.
- Tolmans Hill Park completed.
- Completion of the Great Short Walk project.
- Maxs Infinity Loop multi-use running, walking and cycling track completed.
- Fern Tree Visitors Node completed – bus shelter, public toilets, barbecue, car park and pathway improvements.
- New toilets facilities and showers at Long Beach, Sandy Bay.
- Healthy Hobart Program implemented.



Legacy Park, Queens Domain Hobart

COMMUNITY AND WELLBEING

- Greater Hobart Homelessness Alliance and Housing with Dignity Reference Group established.
- Liveable Cities Information Hub at Mathers Place.
- Trailrider, a purpose-built wheelchair for rough terrain introduced.
- South Hobart Community Centre redeveloped.
- YouthArc redeveloped following the 2018 flood.
- Funding received through the Community Recovery and Resilience Grants Program to support journeys to recovery following the 2018 flood.
- Smoke-free CBD introduced.
- Hobart Respects All campaign launched.
- Immunisation clinics for children and people over 65 years.



I Am Somebody multimedia art project.

ENVIRONMENT AND SUSTAINABILITY

- 16 City buildings with solar energy systems installed.
- Reduction by 18.5 per cent of greenhouse gas emissions from 2011-21.
- 4,266 tonnes of organic waste were diverted from landfill through FOGO waste collection in 2021.
- Single-Use Plastics By-Law introduced in 2021.
- City's fuel break network enhanced and extended.
- Stormwater system management plans completed for all catchments.
- 1,000 street and park trees planted since 2019.
- 222 listings in the Significant Tree Register – an increase of 77 from 2018.



EMERGENCY MITIGATION AND RESPONSE

- 171 hectares of hectares of bushland cleared to create fuel breaks across 191 sites.
- Fire trail network 112kms in length.
- Seven firefighting vehicles and 30 trained firefighting personnel.
- 68 hazard reduction burns across 812 hectares of city-managed land since 2018.
- 40 emergency response team volunteers.
- Flood mapping tools developed and publicly available showing potential flood risks.
- 2018 flood – 129mm of rain in a 24 hour period, total clean up and reinstatement of damaged infrastructure cost of over \$14.5 million.



CIVIC INVOLVEMENT

- Public Meetings held: building heights, kunanyi/Mt Wellington cable car, UTas move to the CBD.
- Elector Poll on building heights held (42 per cent response rate).
- Review of Strategic Risk and Resilience Register.
- 23,000 visits to the Your Say webpage in 2020-21 alone and 1050 surveys completed.
- Consultation that attracted the most interest - North Hobart Place Vision Framework and Access and Parking Plan, Sustainable Hobart Action Plan, Single-use plastics by law, Mountain Bike Network Plan, Central Hobart Precinct Structural Plan, Crowther Reinterpreted, e-Scooters.
- CityTalks event series launched in partnership with the University of Tasmania.

INTERGOVERNMENTAL

- Greater Hobart City Deal signed.
- Ongoing membership of the Council of Capital City Lord Mayors and Secretariat in 2019.
- Working with the State Government to develop the Central Hobart Precinct Structure Plan.
- Worked with the State Government to transition the Taste of Tasmania to a new delivery model.

ENDORSED STRATEGIES AND PLANS

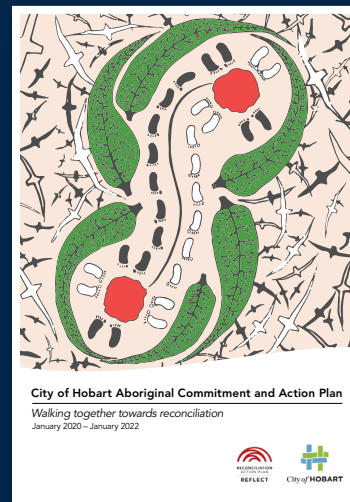
- Connected Hobart Smart City Framework and Action Plan.
- Aboriginal Commitment and Action Plan.
- Public Art Framework.
- Capital City Strategic Plan 2019-29.
- Sustainable Hobart Action Plan.
- Hobart: A City for All Community Inclusion and Equity Framework and associated Commitments.
- Protecting our wild heart Biodiversity Action Plan and map developed.
- Riding the Mountain Plan.
- Bushfire Management Strategy.
- Implemented Hobart: a community vision for our island capital

AWARDS

- The Planning Institute of Australia award for planning excellence in the category of Improving Planning Processes and Practices for the project Connected Hobart Smart City Framework and Action Plan.
- Legacy Park play space was awarded the 2019 National Landscape Award for Play Spaces.
- The 2020 Resilient Australia National Local Government Award for delivering a program to help the Hobart community recover from the May 2018 flood event.
- An award of Excellence in the Local Government Professionals Australia (Tasmania) Community and Service Category for the Hello Hobart Passport to Hobart program.
- Two Tasmania Architecture Awards for the Long Beach, Sandy Bay toilets.
- The Parks and Leisure Australia Strategic and Master Planning 2022 award for the VIC/TAS region for the Riding the Mountain Plan.
- The Smarter Hobart Challenge Bus Shelter and Digital Interface Design was awarded the Technology and Innovation Award from the Planning Institute of Australia.

GOVERNANCE AND POLICY

- First capital city to declare a Climate and Biodiversity Emergency.
- **Significant policies adopted:**
- Sponsorship Policy.
- Social Inclusion Policy.
- Competitive Neutrality Policy.
- Elected Member Behaviour Policy.
- Election Caretaker Period Policy.
- Financial Hardship Assistance Policy.

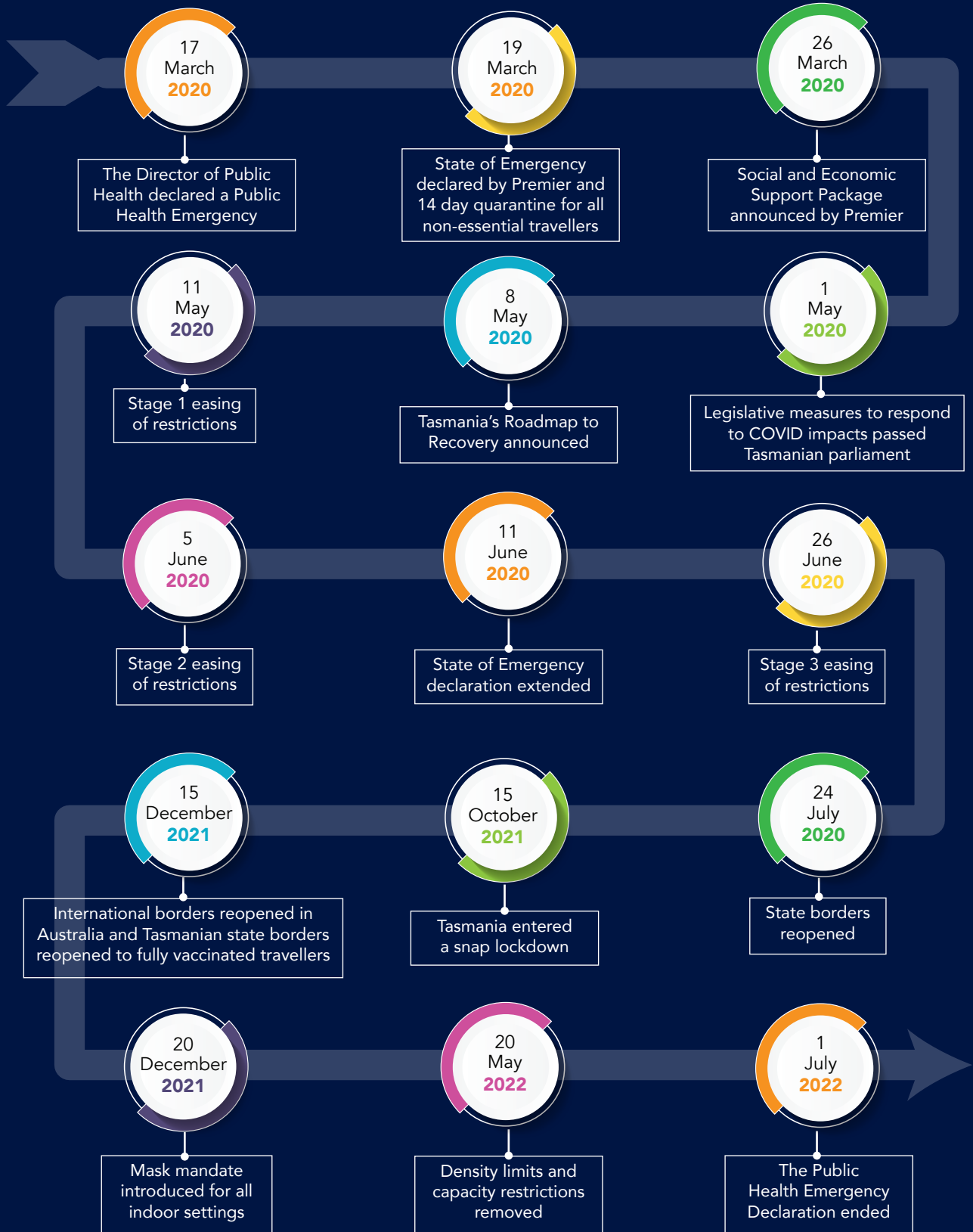


City of Hobart Aboriginal Commitment and Action Plan



2020 Resilient Australia National Local Government Award

COVID-19 TIMELINE



HOW WE RESPONDED TO COVID-19



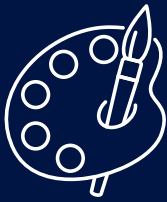
Rent relief in Council-owned and managed buildings



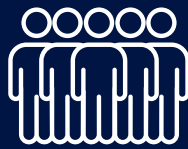
Hardship provisions for rates including postponement



Rates freeze for the 2020-21 financial year



Quick response grants for businesses and Creative Industries



Community grants



Directory of online stores



e-commerce grant to help businesses use online trading platforms



Support for international students



Occupation licences for outdoor dining suspended



Reduced registration fees for food businesses



Passport to Hobart marketing campaigns to assist food and beverage venues



Refunds of fees and charges

Sources:
Australian Bureau of Statistics, 2016 and 2021 Census
Australian Bureau of Statistics, 2022 Count of Australian Businesses Profile Id, <https://profile.id.com.au/tasmania>
City of Hobart