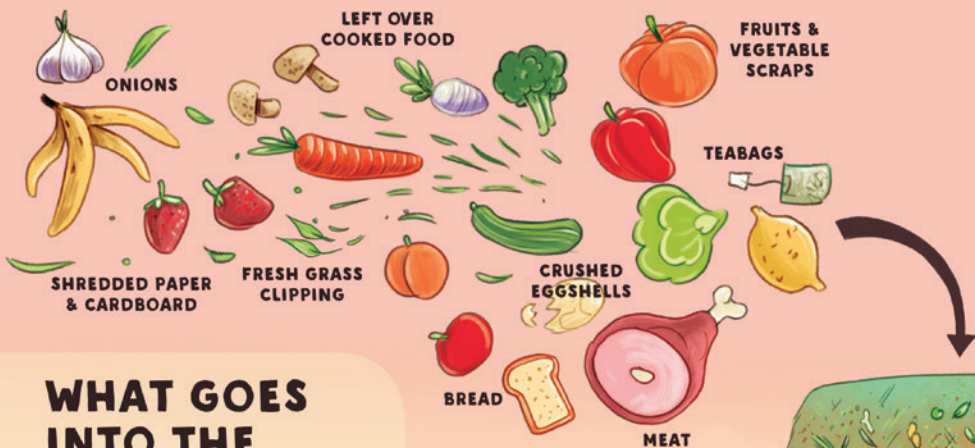


Composting tips from

Good Life
PERMACULTURE



WHAT GOES INTO THE COMPOST PILE

LARGE COMPOST PILES

Like a lasagne, alternate your carbon and nitrogen layers until you have at least 1 cubic metre. Remember to add water between each layer and use a diverse range of ingredients.

The pile will reach 65 degrees (too hot to touch) within 1 to 7 days. When it reaches this point – turn it.

From here on, turn your pile as needed until it's mature.

