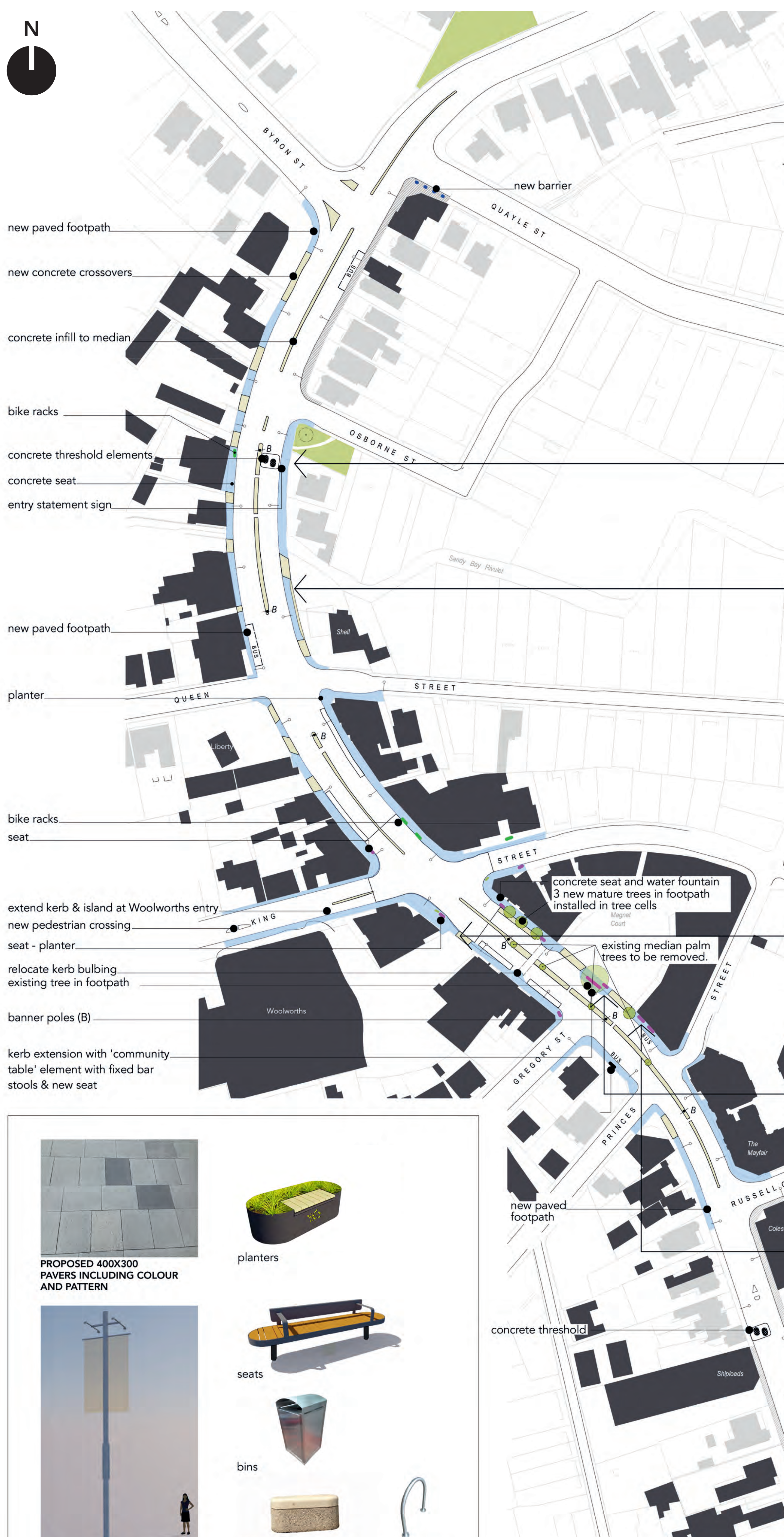
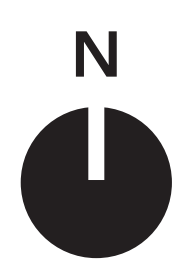


SANDY BAY RETAIL PRECINCT UPGRADE

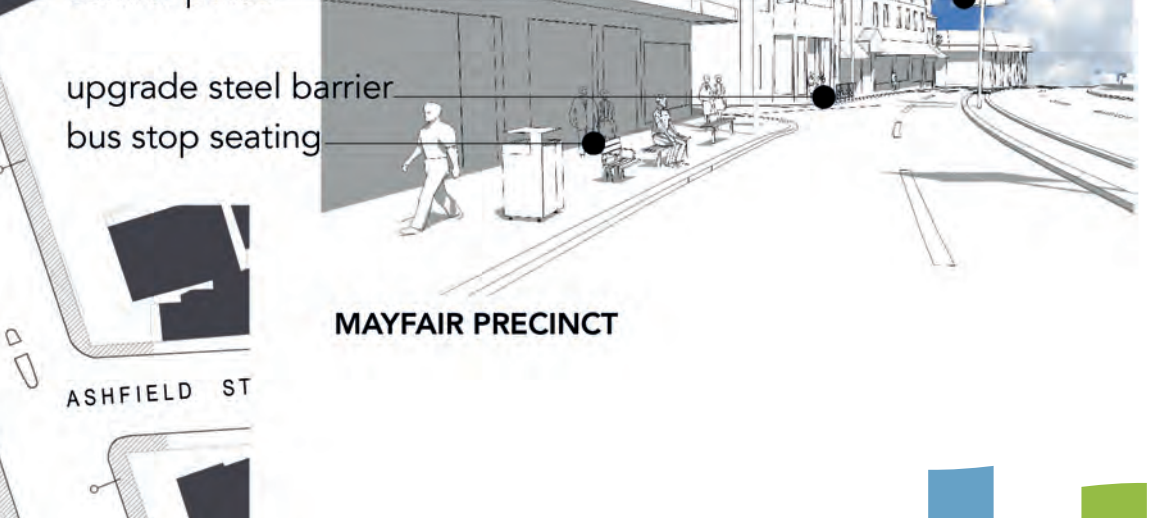
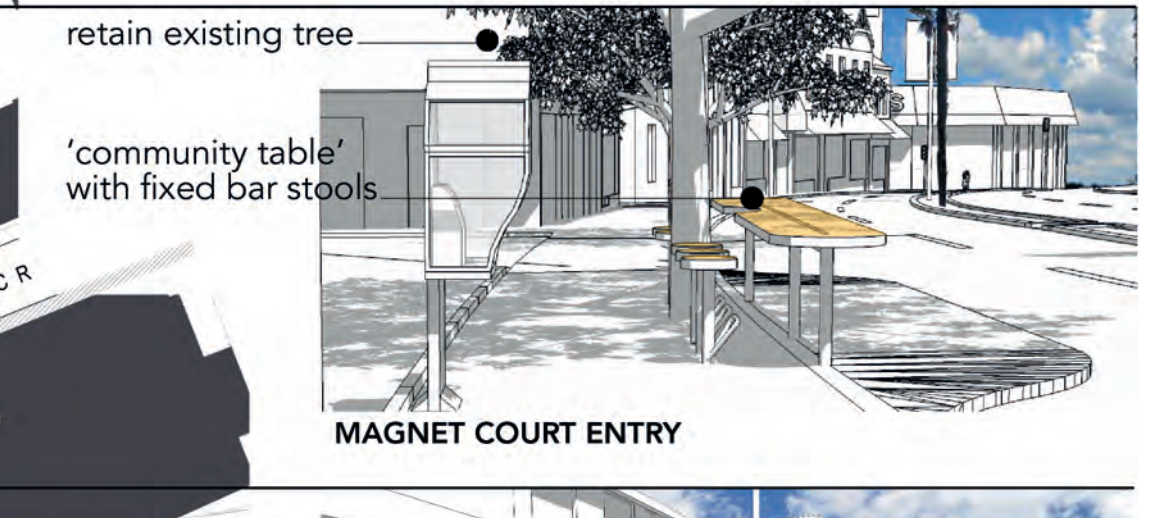
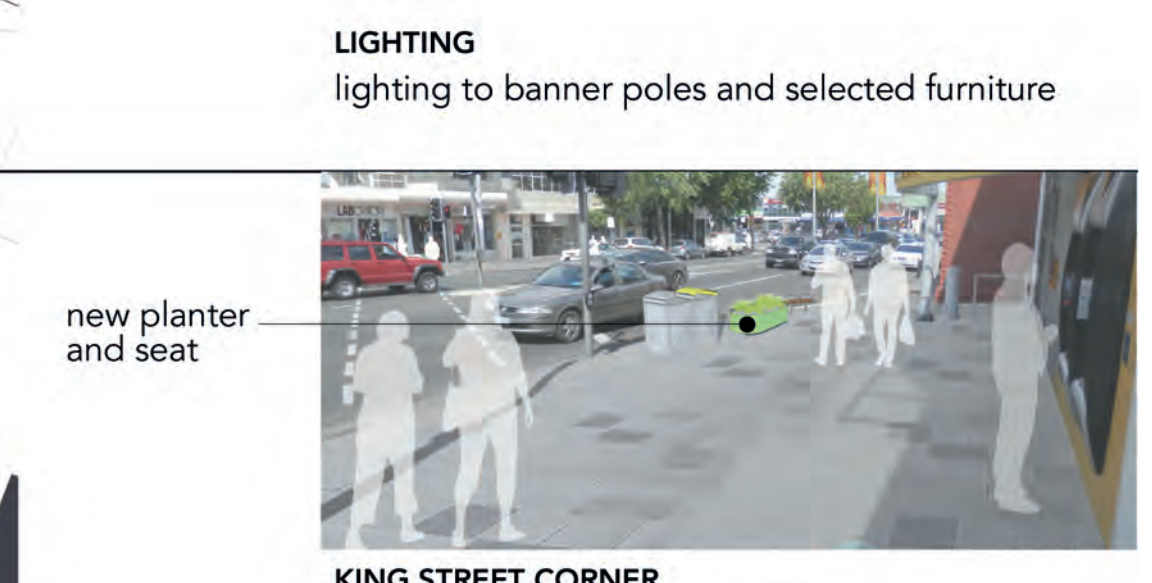
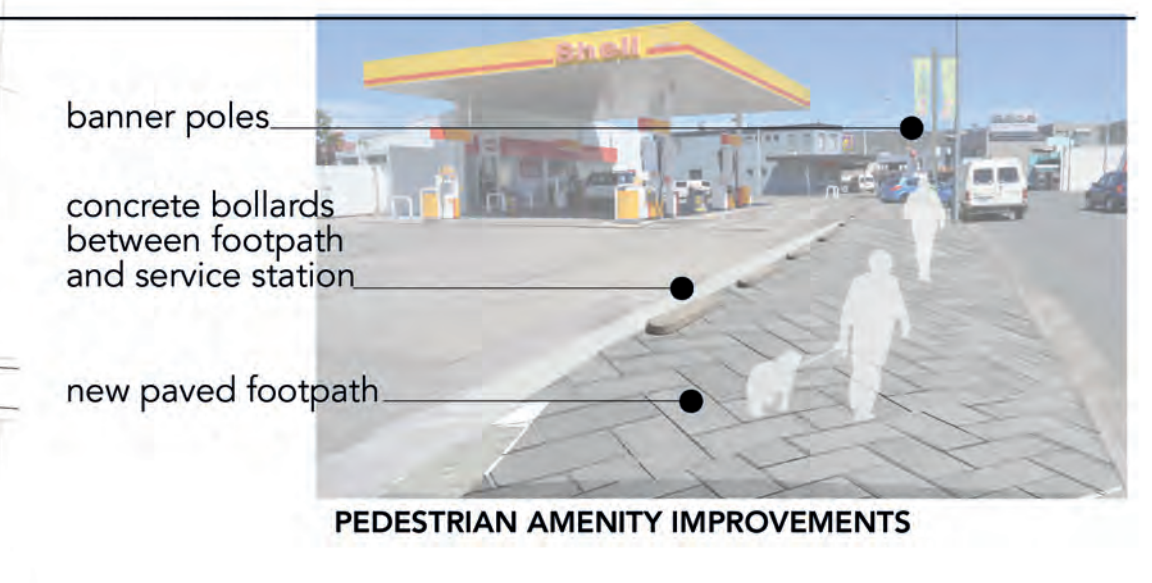
Master plan to upgrade the Sandy Bay Road streetscape



MASTER PLAN ELEMENTS
 The upgrade will deliver new:
FOOTPATHS_ varying coloured grey pavers
CROSSINGS_ suitable for people who are older or with disabilities
SEATING_ oval shaped with timber slats
PLANTER BOXES_ oval shaped green planter boxes
SIGNAGE_ new poles to fly festival and seasonal banners

LEGEND

exist. residential buildings	hotmix footpath
exist. commercial buildings	threshold treatment
paved footpath	seating
concrete crossovers/ parking areas/ medians	bike rack
vegetation	banner pole



PROPOSED 400X300 PAVERS INCLUDING COLOUR AND PATTERN

PROPOSED ALUMINIUM BANNER POLES (6 NO.) - LOCATED CENTRAL MEDIAN

planters

seats

bins

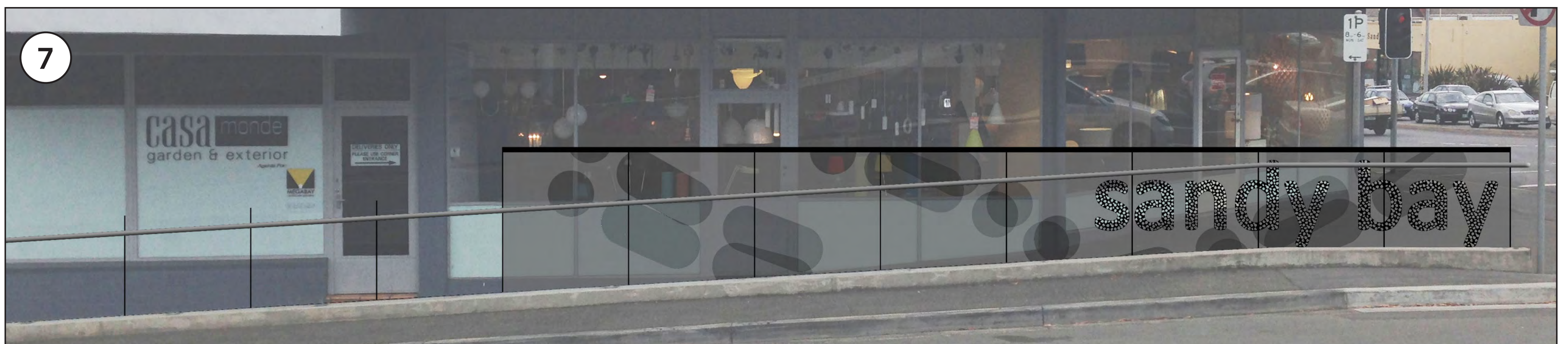
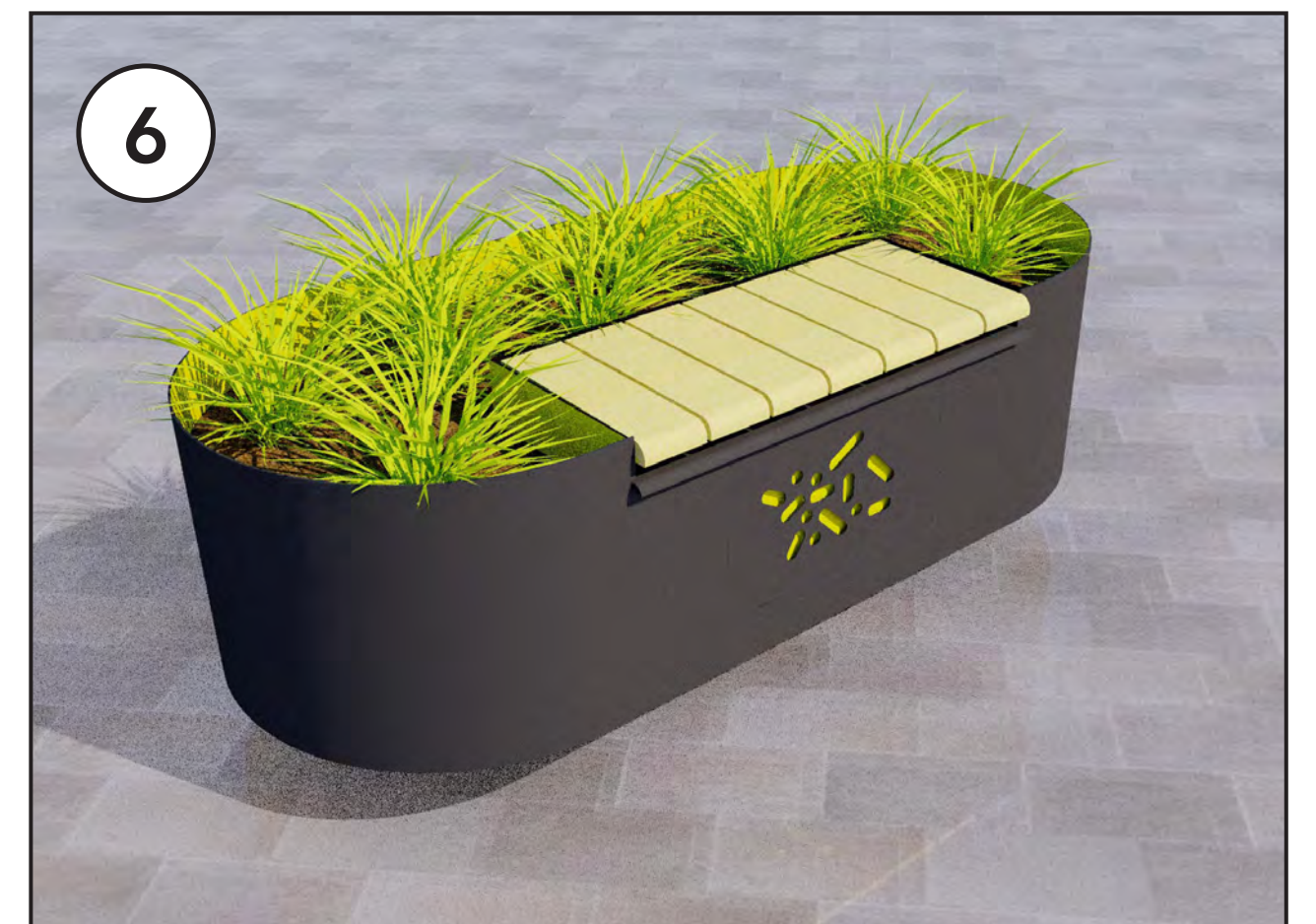
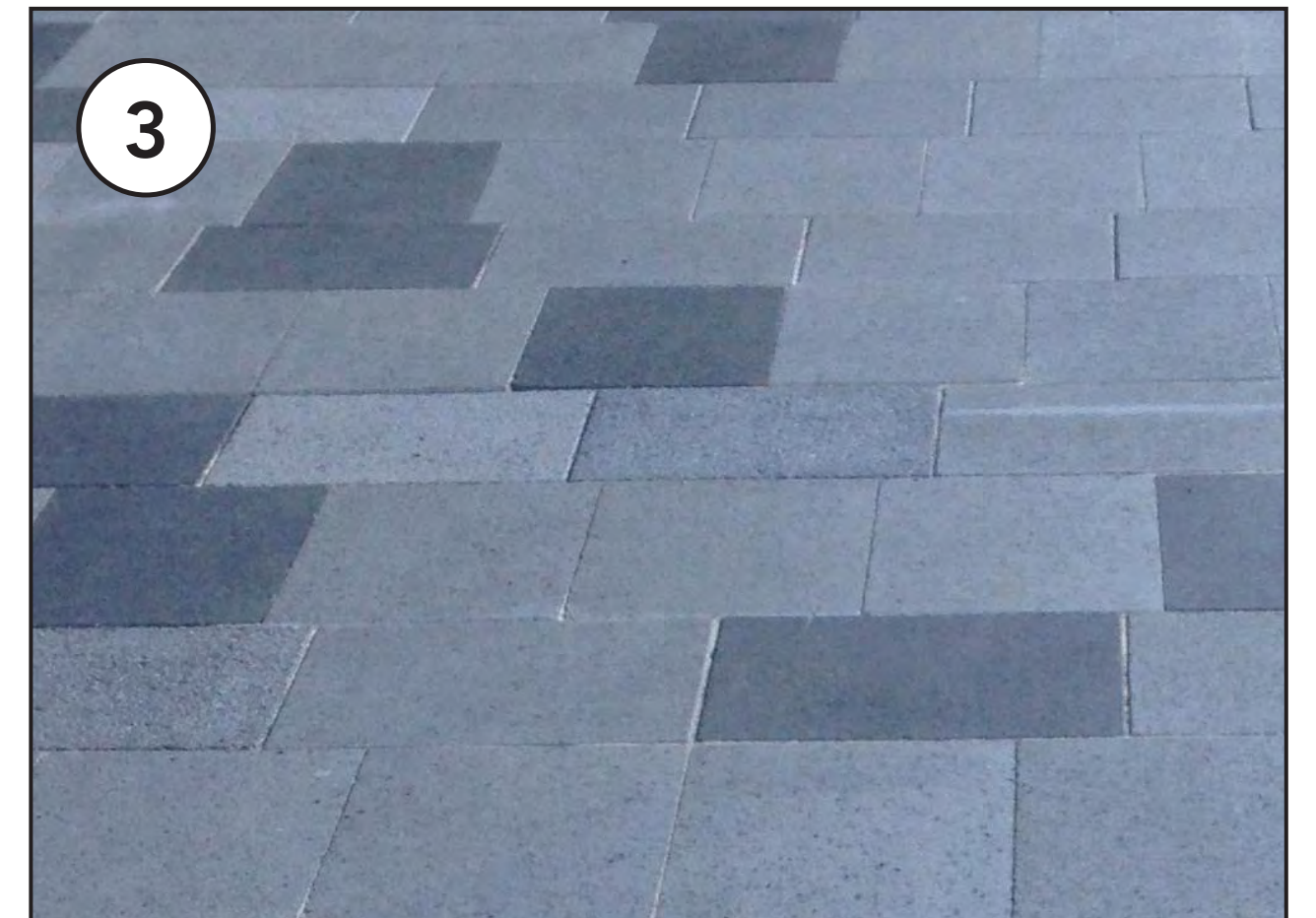
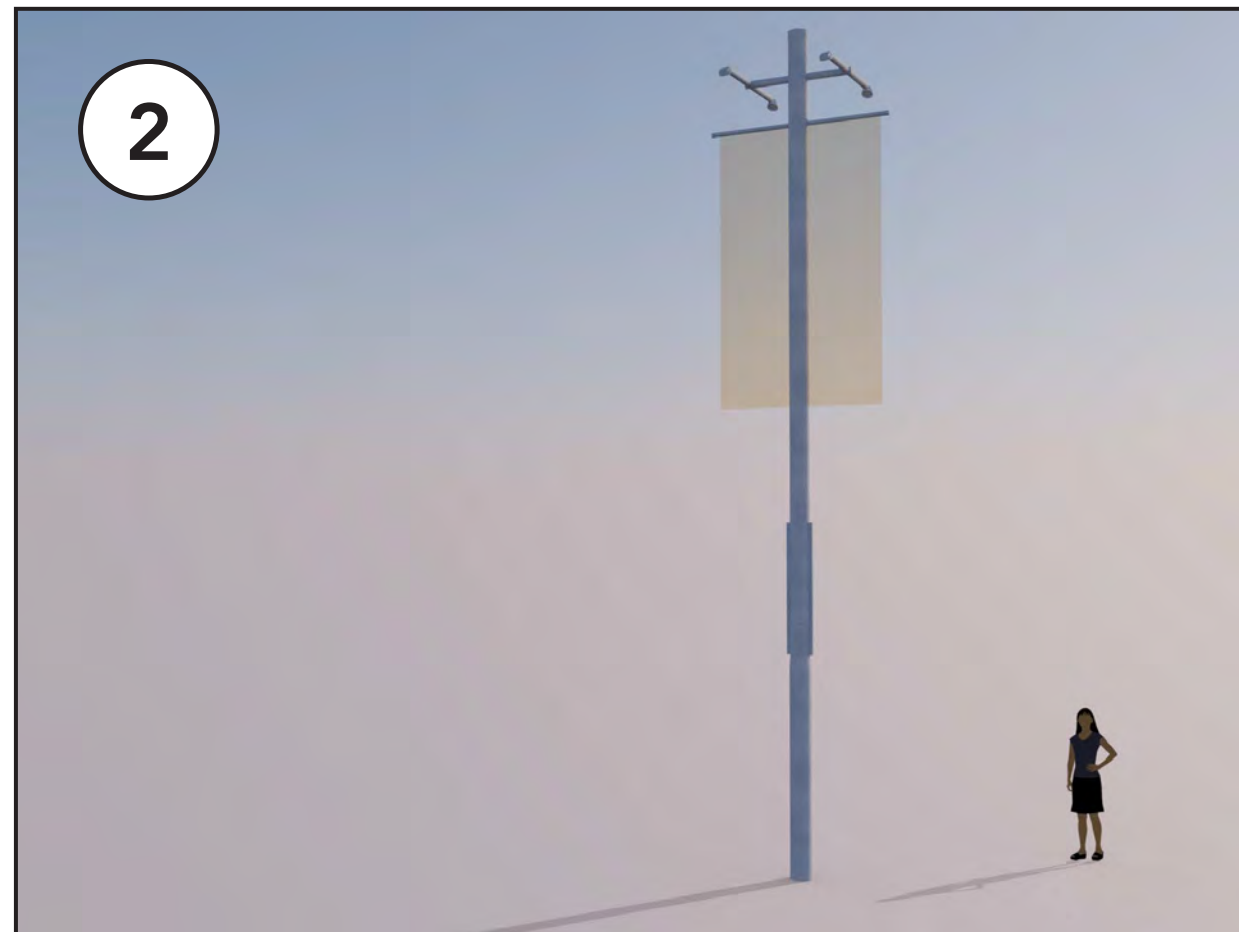
concrete seat

bike racks



SANDY BAY RETAIL PRECINCT UPGRADE

Design elements



- 1 Concrete seat
- 2 Banner pole
- 3 Paving pattern
- 4 Seat
- 5 Bench
- 6 Planter box
- 7 New barrier element

SANDY BAY RETAIL PRECINCT UPGRADE

FAQ's

1 Why is the City of Hobart upgrading the Sandy Bay retail precinct?

The City of Hobart is planning to update and revitalise several local retail precincts within the City as part of the Transforming Hobart capital works program. This upgrade will result in a new, contemporary streetscape.

2 What are the main features of the work?

- Footpaths will be repaved with modern pavers, which will also allow the slope to better satisfy current standards with entrances to shops improved where possible.
- New banner poles will provide an opportunity for marketing activities.
- New seats and planter boxes will be installed at various locations.
- Sections of the kerb and gutter will be reconstructed, along with new vehicle crossovers where necessary.

3 How were the plans developed?

The City talked to residents, businesses and other stakeholders last year to identify the needs of the precinct. The feedback was included in the design, resulting in a focus on safety, amenity and a fresh, consistent look.

4 When will the work start and how long will it take?

Work will commence in early September 2016 and is planned to be completed in Summer 2018. It will be undertaken in a number of stages, timed to minimise disruption. For instance, construction in the pre-Christmas period will not take place between Queen and Princes Streets.

5 How will I be affected?

Sections of the road will be partially closed, footpaths will be re-routed and construction machinery will be operating along Sandy Bay Road resulting in some noise and incidental disturbance. Two lanes of traffic will always be kept open in peak hour directions.

6 How will parking on the street be impacted?

Some parking spots on Sandy Bay Road will be lost when work is occurring. Where these spots are will depend on the stage of work being undertaken.

7 Will there be a lot of noise?

At each work site there will be some noise — mostly machinery and vehicular noise — such as diesel engine noise from excavators and trucks.

8 What are the hours of work likely to be?

Work will typically start Monday to Friday at 7.30am and finish at 4.30pm. For some periods however, to work around the peak hour traffic, this may be extended from 6am to 6pm. If work is required outside these hours people in the immediate vicinity will be notified.

9 How can I contact someone regarding the upgrade?

For more information, please call the City's Community Engagement Advisor on telephone 03 6238 2711 or via email to coh@hobartcity.com.au

Before the work starts, all effected businesses will be contacted to discuss specific operational requirements and needs in more detail.

The City's website will also be kept updated: hobartcity.com.au/sandybayretailprecinct

