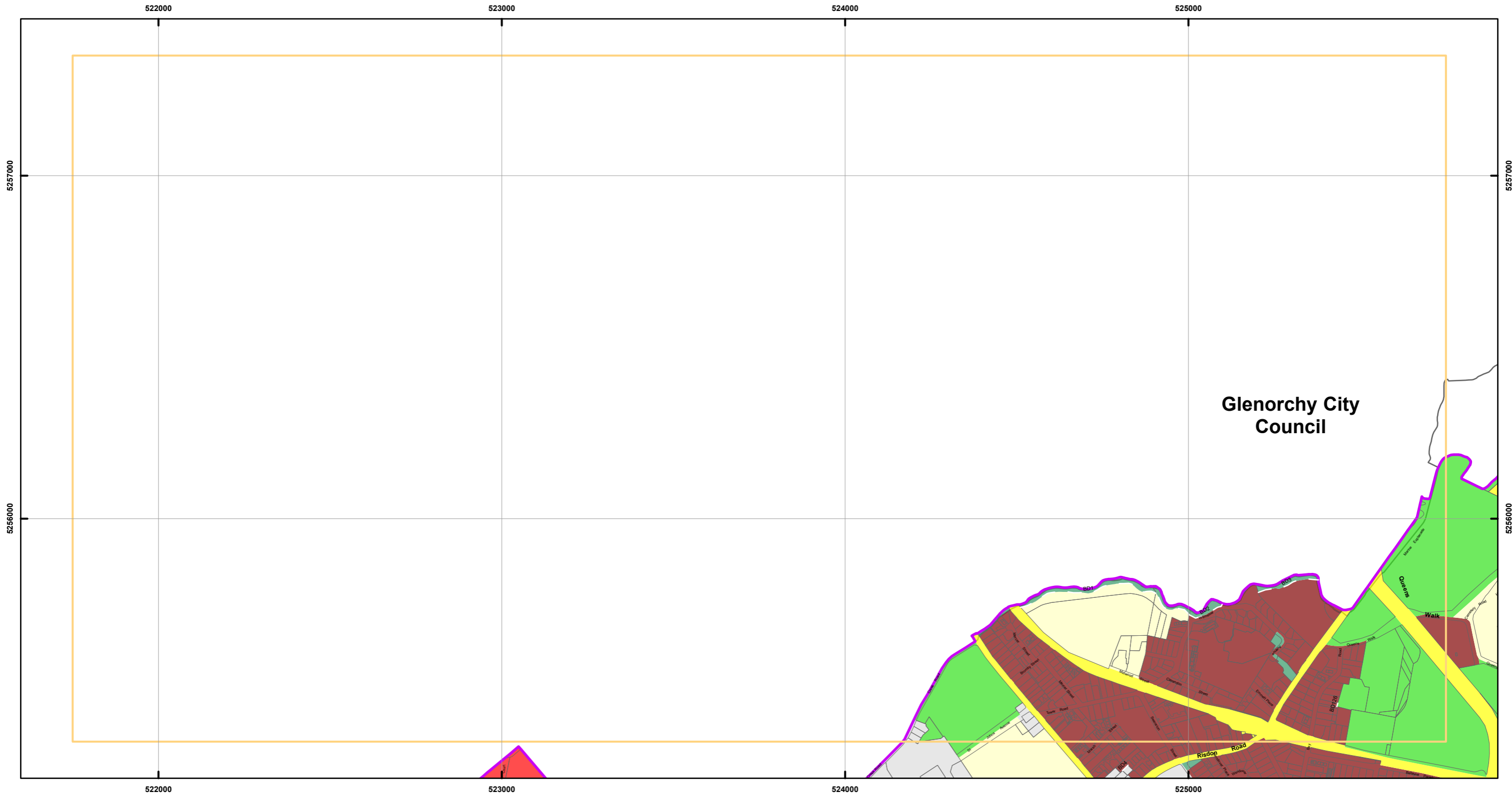
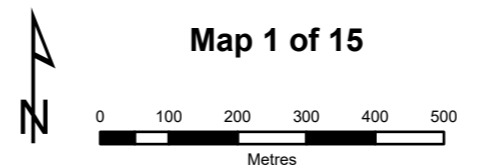


# Tasmanian Planning Scheme - Zones - Hobart Local Provisions Schedule



Zones Legend		
General Residential	Central Business	Community Purpose
Inner Residential	Commercial	Recreation
Low Density Residential	Light Industrial	Open Space
Rural Living	Landscape Conservation	Particular Purpose
Local Business	Environmental Management	Property Parcels
General Business	Port and Marine	Site-specific Qualifications (SSQs)
	Utilities	LPS Boundary

Zone Boundary Definitions Legend
BD1, From Tower Rd bdy W along fenceline to railway bdy
BD126, Between 22072/1 and 147052/1 to PID 2559027
BD2, From S bank of New Town Rivulet to Wilmstow Ave, along the N kerbline, across Tower Rd to the S of New Town Rivulet Linear Park
BD3, As delineated on HCC plan S-912-365 dated 12/08/2013.
BD4, Between 140542/2 and 123011/2

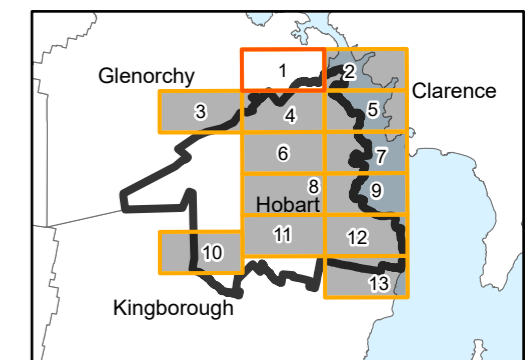


**Map 1 of 15**

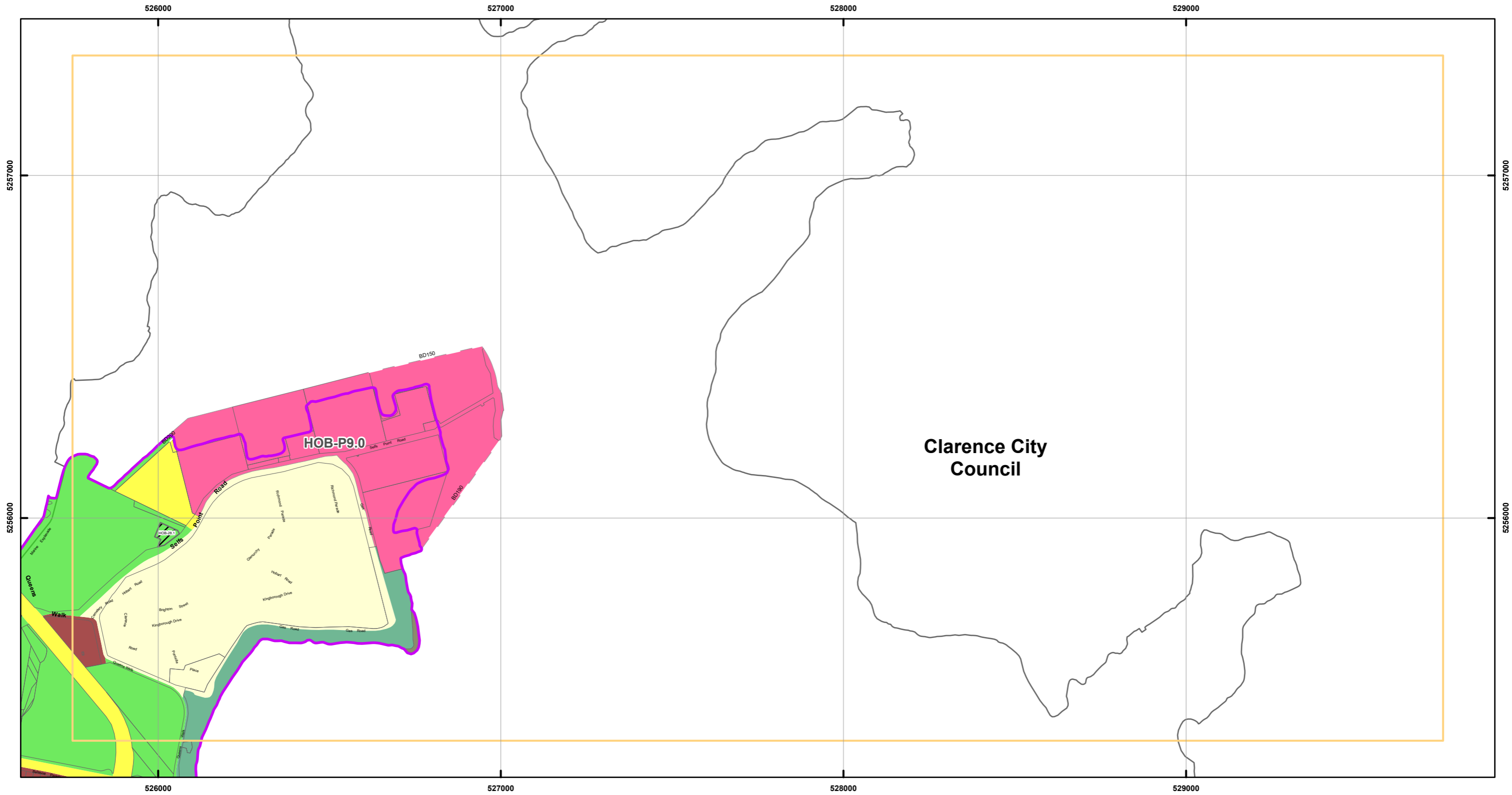
Coordinate System: GDA 94 MGA Zone 55

Zone data from Hobart City Council  
 Base topographic data from the LIST © State of Tasmania  
 Land title information current as at 22/03/2023

Date: 17/04/2023

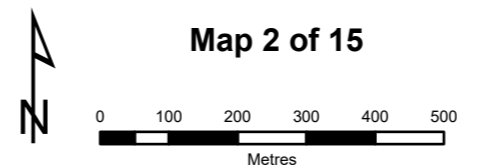


# Tasmanian Planning Scheme - Zones - Hobart Local Provisions Schedule



Zones Legend		
General Residential	Central Business	Community Purpose
Inner Residential	Commercial	Recreation
Low Density Residential	Light Industrial	Open Space
Rural Living	Landscape Conservation	Particular Purpose
Urban Mixed Use	Environmental Management	Property Parcels
Local Business	Port and Marine	Site-specific Qualifications (SSQs)
General Business	Utilities	LPS Boundary

Zone Boundary Definitions Legend
BD150. Between NE cnr of PID 552782 to N cnr of 129032/1
BD190. From the S cnr of the title for the jetty 129032/1 to the SE cnr of the fence the crown land
BD200. A prolongation of the SE bdy of 163940/2

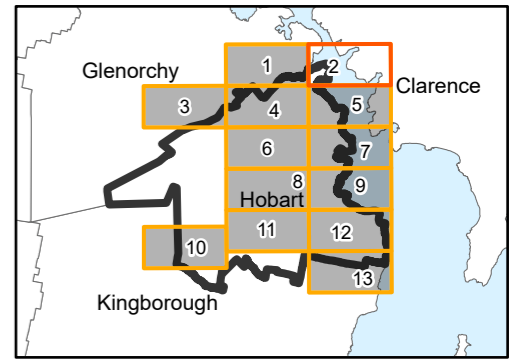


**Map 2 of 15**

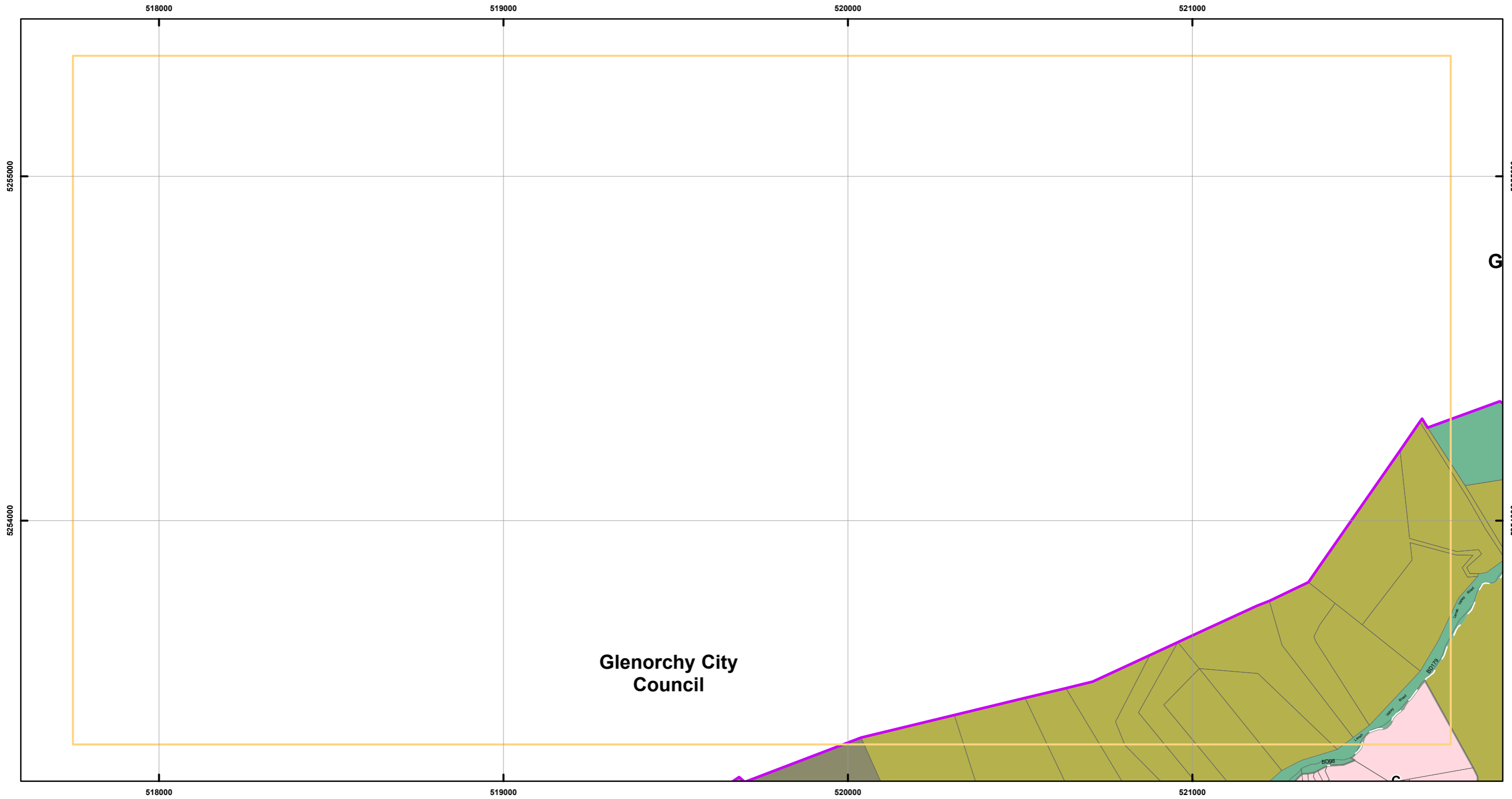
Coordinate System: GDA 94 MGA Zone 55

Zone data from Hobart City Council  
 Base topographic data from the LIST © State of Tasmania  
 Land title information current as at 22/03/2023

Date: 17/04/2023



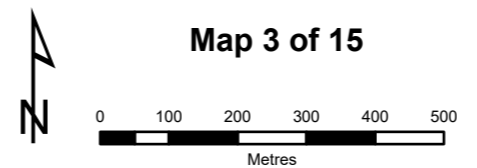
# Tasmanian Planning Scheme - Zones - Hobart Local Provisions Schedule



Glenorchy City Council

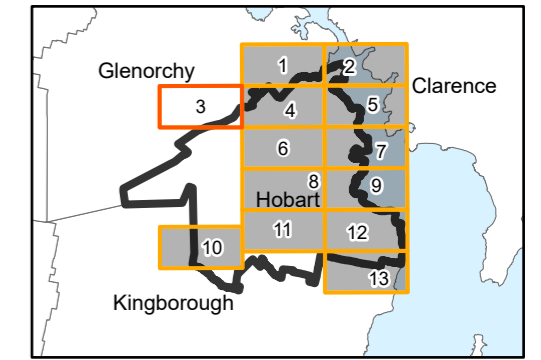
Zones Legend		
General Residential	Central Business	Community Purpose
Inner Residential	Commercial	Recreation
Low Density Residential	Light Industrial	Open Space
Rural Living	Landscape Conservation	Particular Purpose
Urban Mixed Use	Environmental Management	Property Parcels
Local Business	Port and Marine	Site-specific Qualifications (SSQs)
General Business	Utilities	LPS Boundary

Zone Boundary Definitions Legend	
BD179, Top of creek bank	
BD98, Between N cnr of 79030/1 and SW cnr 134088/3	



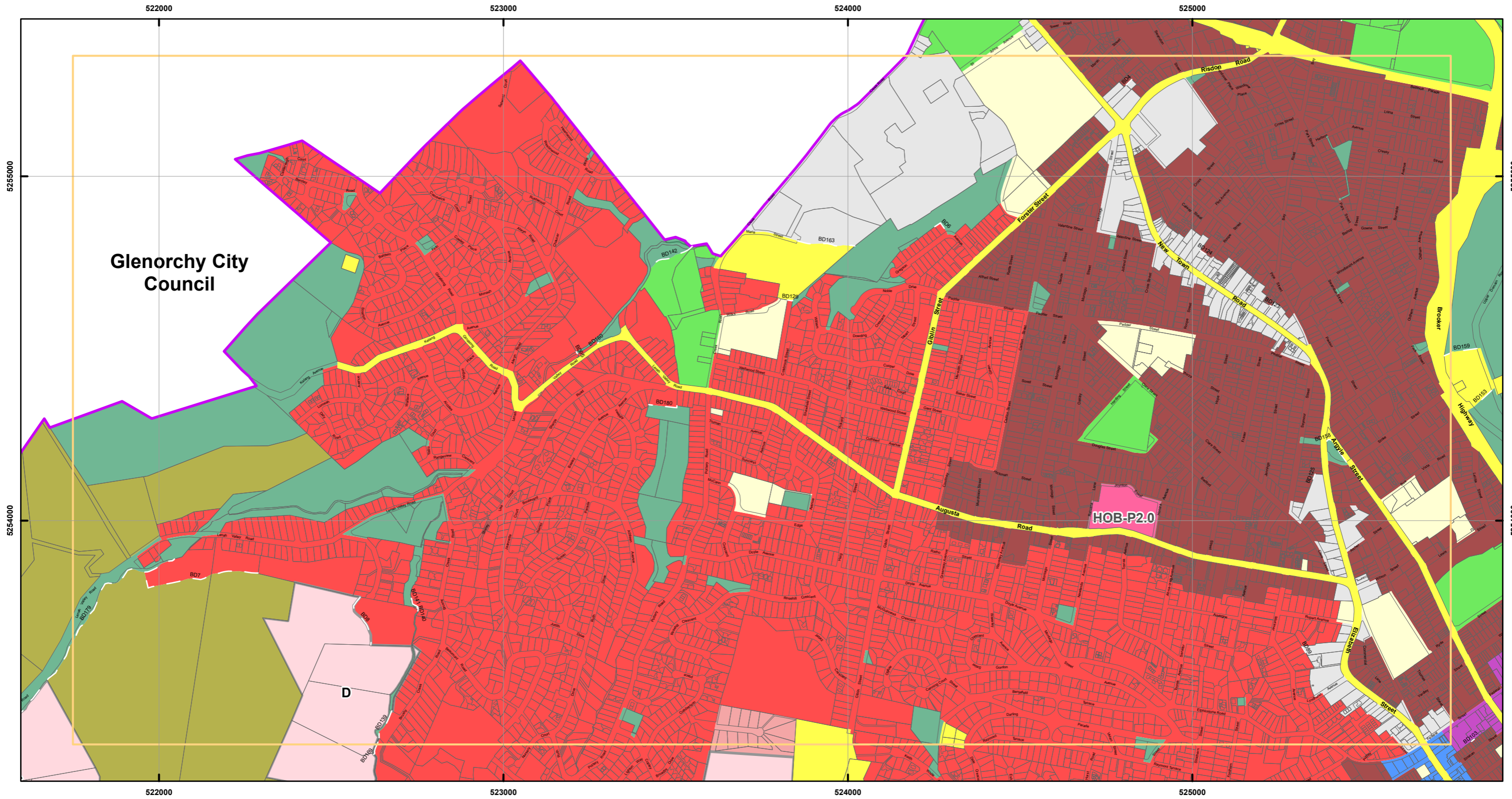
Map 3 of 15

Coordinate System: GDA 94 MGA Zone 55  
 Zone data from Hobart City Council  
 Base topographic data from the LIST © State of Tasmania  
 Land title information current as at 22/03/2023  
 Date: 17/04/2023





# Tasmanian Planning Scheme - Zones - Hobart Local Provisions Schedule

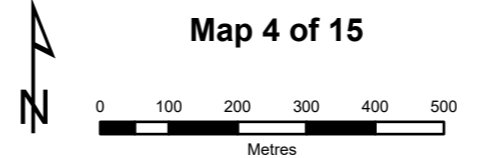


Glenorchy City Council

HOB-P2.0

Zones Legend		
	General Residential	
	Inner Residential	
	Low Density Residential	
	Rural Living	
	Urban Mixed Use	
	Local Business	
	General Business	
	Central Business	
	Commercial	
	Light Industrial	
	Landscape Conservation	
	Environmental Management	
	Port and Marine	
	Utilities	

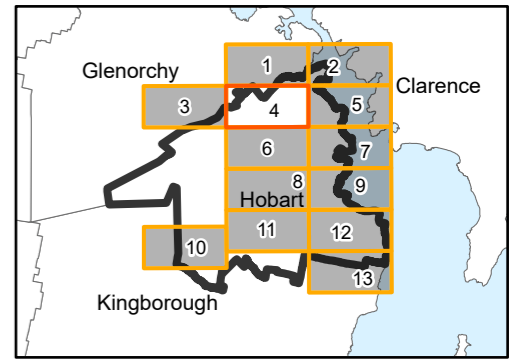
Zone Boundary Definitions Legend	
BD103	Between 605642 and N cr 125848/2
BD123	Between 9960/1 and Strata site 60232 to PID 5515599
BD124	Between 22094/1 and 53154/1 to 4246/1
BD125	Between 19907/11 and 252465/1 to 32216/1
BD126	Between 22072/1 and 147052/1 to PID 2559627
BD129	Between 143173/2 and 155963/5 to its intersection of the body between 149960/2 and 155963/5
BD130	Watercourse bank
BD140	Watercourse bank
BD141	Watercourse bank
BD142	Watercourse bank
BD153	Fence S side of Hobart City Council's Clearys Gates Depot
BD158	Stone wall surround of park
BD159	Clearys Gates Depot N body fence
BD160	Between road frontage crns
BD163	Centreline of road and the prolongation to the boundary of Crown Land (potential PID 2513897)
BD169	3m from the top of creek bank to the S side of transmission lines
BD172	Top of creek bank
BD180	From 62454/1 to a pt which is a 6m extension of the body of 115019/1, to 115019/1
BD4	Between 140542/2 and 123011/2
BD6	From 60896/1, 20m then parallel to NW boundaries 60896/1, 202236/1 & 139980/2 to body of Gregor Ave
BD7	From 162978/1, along 180m contour to 20363/1. Then via contour to a pt distant 180m. Then NNW via a line through S pt 130789/1 to S bank New Town Rivulet
BD8	From 19899/1, along 150m contour to 87502/1
BD89	Between the E cr of 7275/8 and the N cr of 116830/1
BD95	Between SE cr of 251572/1 and SW cr of 248868/1 at intersection of S bank on New Town Rivulet



Map 4 of 15

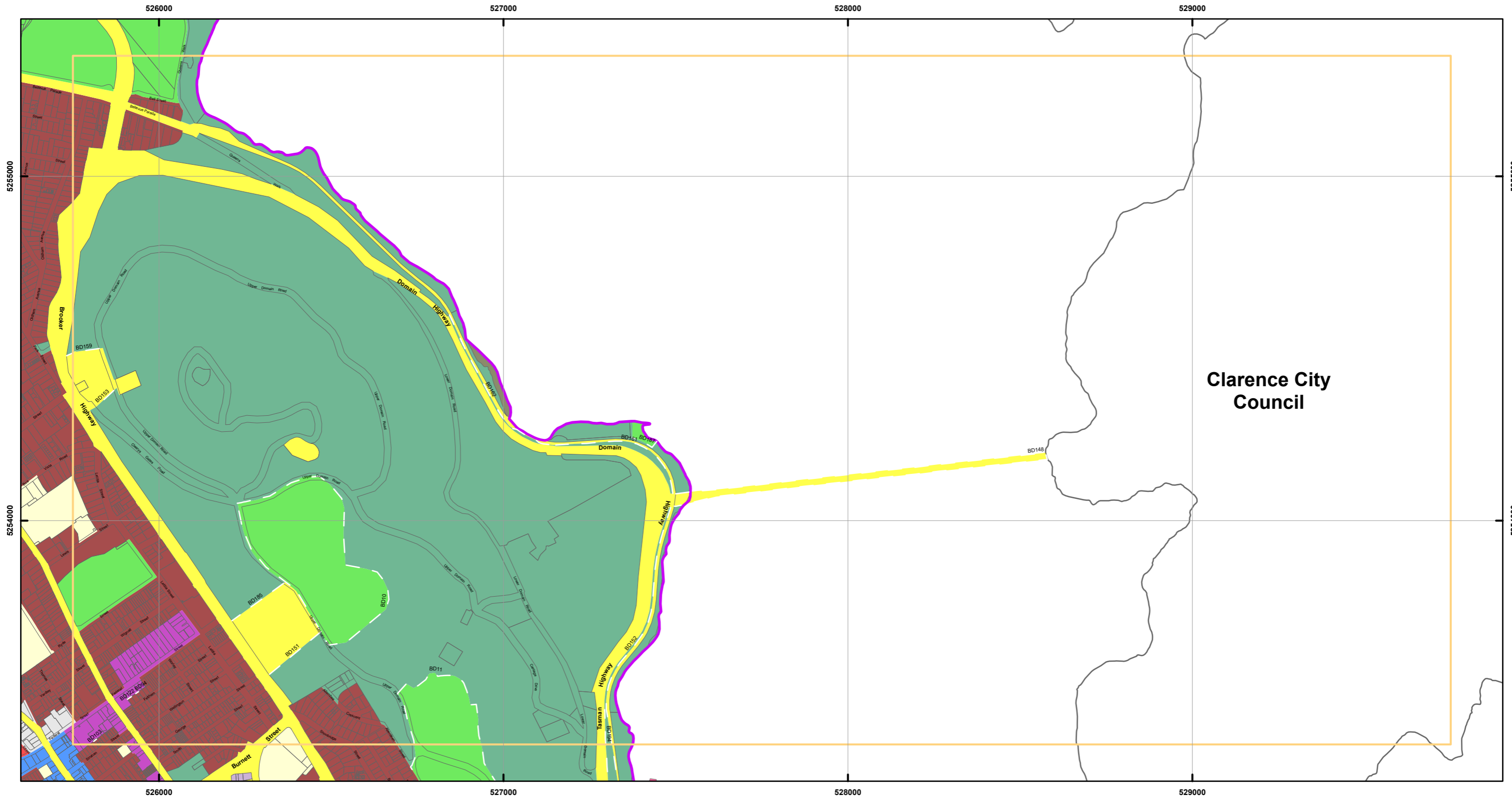
Coordinate System: GDA 94 MGA Zone 55  
 Zone data from Hobart City Council  
 Base topographic data from the LIST © State of Tasmania  
 Land title information current as at 22/03/2023

Date: 17/04/2023





# Tasmanian Planning Scheme - Zones - Hobart Local Provisions Schedule



Zones Legend		
General Residential	Central Business	Community Purpose
Inner Residential	Commercial	Recreation
Low Density Residential	Light Industrial	Open Space
Rural Living	Landscape Conservation	Particular Purpose
Urban Mixed Use	Environmental Management	Property Parcels
Local Business	Port and Marine	Site-specific Qualifications (SSQs)
General Business	Utilities	LPS Boundary

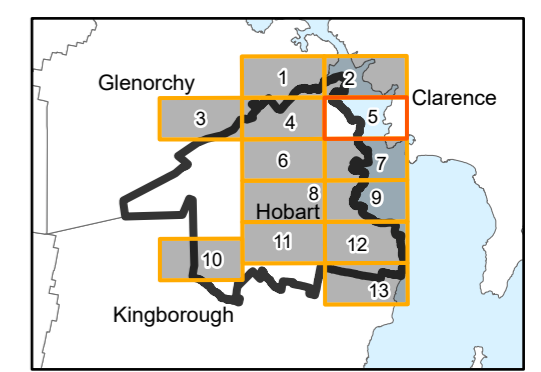
Zone Boundary Definitions Legend
BD10, Around Domain Athletic Centre and Soldiers Memorial Oval via fencelines and Upper Domain Rd
BD103, Between 60564/2 and N cnr 125848/2
BD11, Around Domain Tennis Centre and TCA Ground
BD122, Between 152576/1 and 14741/1 to 141226/1
BD148, Tasman Bridge
BD151, Fence line on SE of the Quarry off the Brooker Avenue
BD152, Fence line between the intercity cycleway and the rail line
BD153, Fence S side of Hobart City Council's Clearys Gates Depot
BD159, Clearys Gates Depot N bdy fence
BD161, Fence along railway track
BD162, Edge of bike track and old Botanical Gardens Railway station platform
BD185, Fence on NW side of quarry, and prolongation thereof
BD187, N edge of bike track to E edge of concrete launch ramp
BD194, Barrier fence on Tasman highway
BD94, Between N cnr 152576/1 and W cnr 126669/1

**Map 5 of 15**

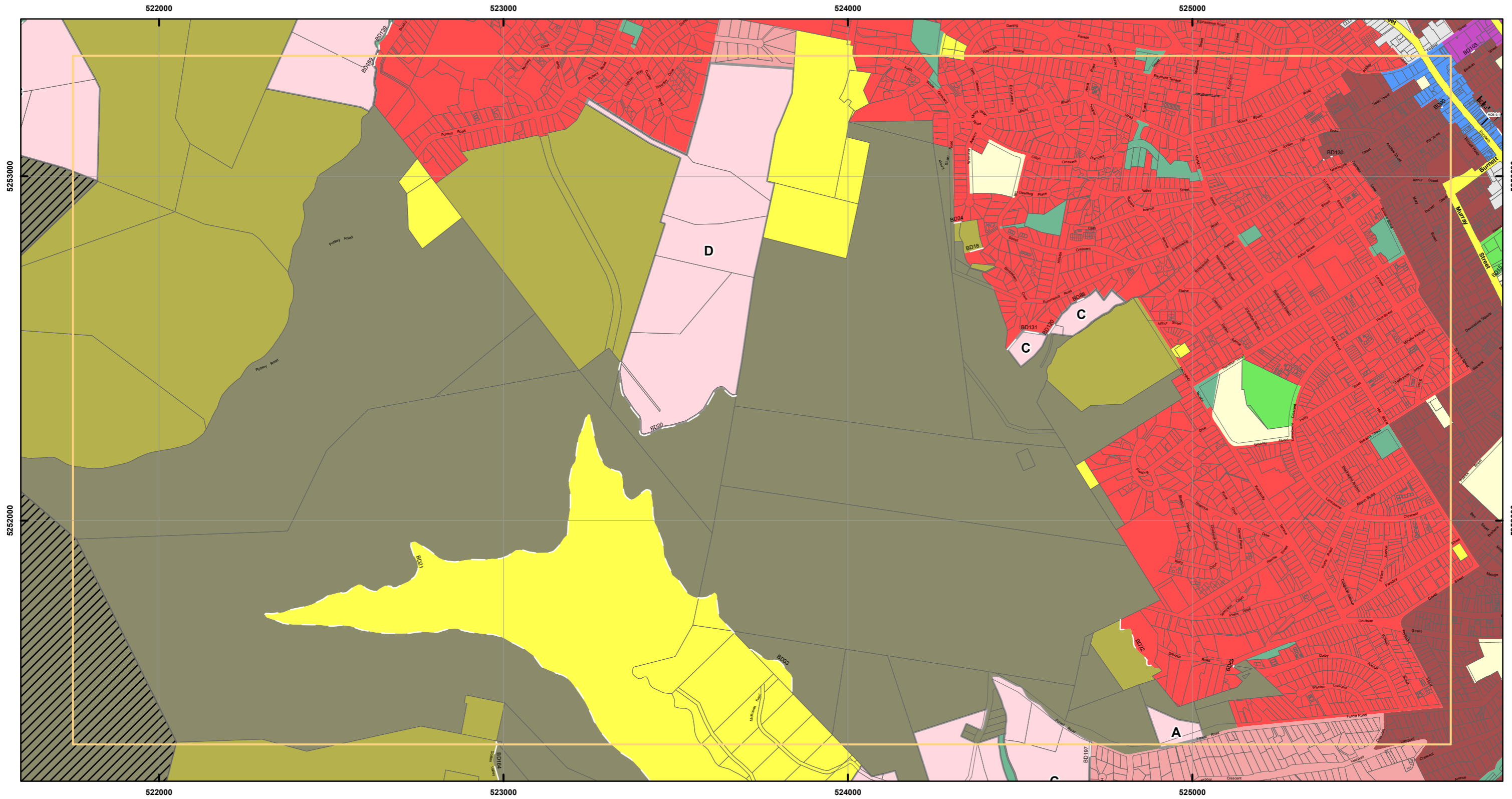
Coordinate System: GDA 94 MGA Zone 55

Zone data from Hobart City Council  
Base topographic data from the LIST © State of Tasmania  
Land title information current as at 22/03/2023

Date: 17/04/2023

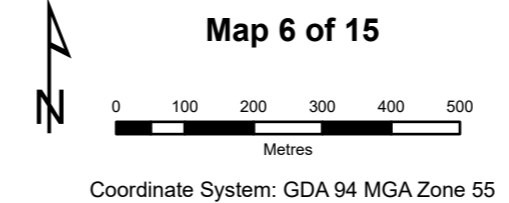


# Tasmanian Planning Scheme - Zones - Hobart Local Provisions Schedule



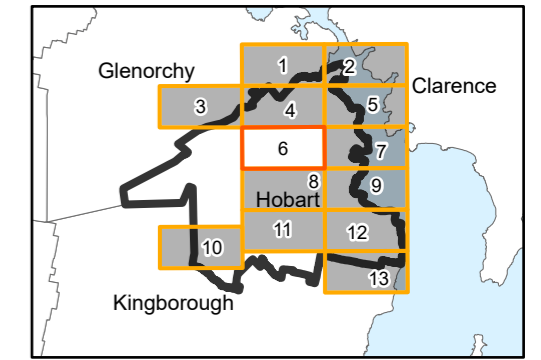
Zones Legend			
	General Residential		Community Purpose
	Inner Residential		Recreation
	Low Density Residential		Open Space
	Rural Living		Particular Purpose
	Urban Mixed Use		Property Parcels
	Local Business		Site-specific Qualifications (SSQs)
	General Business		LPS Boundary
	Central Business		Utilities
	Commercial		
	Light Industrial		
	Landscape Conservation		
	Environmental Management		
	Port and Marine		

Zone Boundary Definitions Legend	
BD103	Between 60564/2 and N cnr 125848/2
BD120	Between 3232/1/2 and 174925/200
BD121	Between 14298/2 and strata site 136111 to 204085/1
BD130	Between 204062/1 and 136111/1
BD131	Between 174925/200 to 524507/E, 5252550N to 174925/200
BD139	Watercourse bank
BD14	Between 139569 to 137807/1
BD15	From 147733/1, following fence line 147738/1 then bdy NW to the Tasma St
BD164	Centreline of reserved road
BD169	3m from the top of creek bank to the S side of transmission lines
BD179	Top of creek bank
BD18	Starting 3m NW from S cnr on the W bdy of 55488/46, W to pt 42.57m from S pt on W bdy of 153248/2
BD197	Prolongation of the W bdy of 170916/7
BD20	A line offset 5m to N, parallel to fire trail through lot
BD21	NW bdy of 140451/1 for 65m, then along 200m contour to N line of 252507/1
BD22	A line following 155m contour within 158433/1
BD24	Between 153348/2 and W bdy of 272216/3
BD33	Along the 200m contour off 40238/35 to the NE line of 140451/1
BD69	Between the N cnr of 129226/1 and a S cnr of 238263/1
BD88	Between the E cnr of 20375/3 and the S cnr of 20375/2
BD90	Between the E cnr of 90512/2 and the S cnr of 57010/2



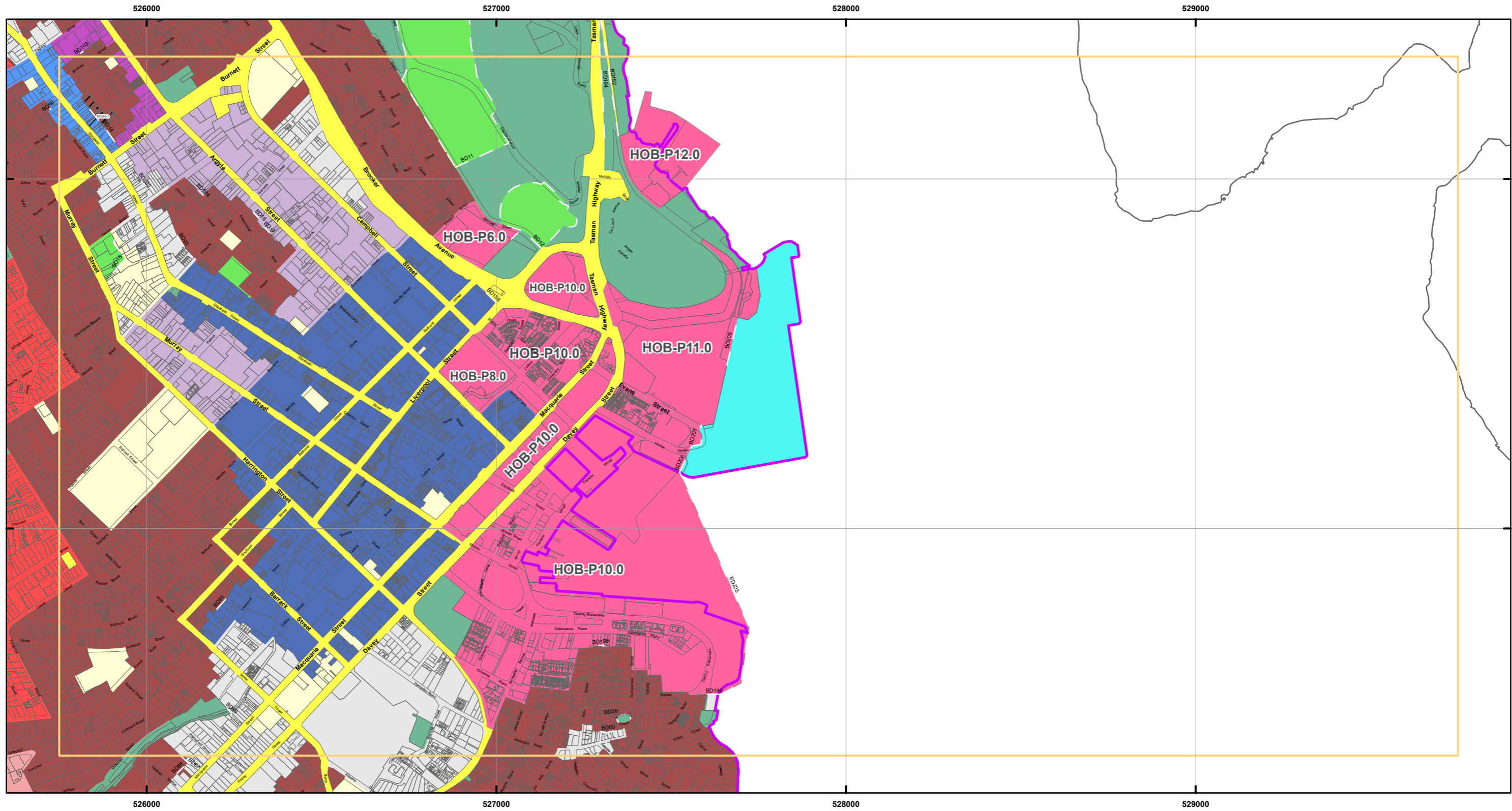
Coordinate System: GDA 94 MGA Zone 55  
 Zone data from Hobart City Council  
 Base topographic data from the LIST © State of Tasmania  
 Land title information current as at 22/03/2023

Date: 17/04/2023



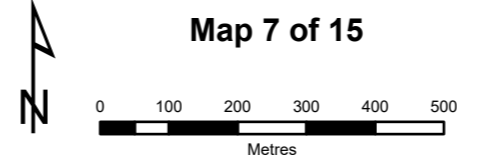


# Tasmanian Planning Scheme - Zones - Hobart Local Provisions Schedule



Zones Legend			
	General Residential		Central Business
	Inner Residential		Commercial
	Low Density Residential		Light Industrial
	Rural Living		Recreation
	Urban Mixed Use		Open Space
	Local Business		Particular Purpose
	General Business		Property Parcels
	Utilities		Site-specific Qualifications (SSQs)
			LPS Boundary

Zone Boundary Definitions Legend
BD103: Between 805442 and N cr of 128442
BD118: Around Central Terminals and TGA Ground
BD112: Fenceline surrounding Hobart Aquatics Centre
BD127: Between 157663/1000 and 163231 to intersection with Aberdeen St
BD14: Between 126689 to 127611
BD15: From 1477331, following backline 1477381 then bdy NW to the Tasma St
BD152: Force line between the Intercity cycleway and the rail line
BD198: Between 200221 and 1641811 and the intersection of that line with Liverpool Street
BD16: Between 368192 and 296681
BD17: A line joining points 'A' & 'B' on 5744
BD184: Between NE bdy of 1028191 to intersection with NW bdy of 2072151
BD19: Between 119981 and 296681
BD194: Barrier fence on Tasman Highway
BD198: Prolongation of the N bdy of 1422023
BD198: A line from the NE cr of 1483831 to 1635434
BD202: A line between the E cr of 1689970 and a pt 8.16m SW along bdy from N cr of 422321
BD205: Sullivan's Cove PPZ extent
BD206: Sullivan's Cove PPZ extent
BD207: Sullivan's Cove PPZ extent
BD208: Sullivan's Cove PPZ extent
BD209: Sullivan's Cove PPZ extent
BD210: Sullivan's Cove PPZ extent
BD211: Sullivan's Cove PPZ extent
BD212: Sullivan's Cove PPZ extent
BD213: Sullivan's Cove PPZ extent
BD214: Sullivan's Cove PPZ extent
BD215: Sullivan's Cove PPZ extent
BD216: Sullivan's Cove PPZ extent
BD217: Sullivan's Cove PPZ extent
BD218: Sullivan's Cove PPZ extent
BD219: Sullivan's Cove PPZ extent
BD220: Sullivan's Cove PPZ extent
BD221: Sullivan's Cove PPZ extent
BD222: Sullivan's Cove PPZ extent
BD223: Sullivan's Cove PPZ extent
BD224: Sullivan's Cove PPZ extent
BD225: Sullivan's Cove PPZ extent
BD226: Sullivan's Cove PPZ extent
BD227: Sullivan's Cove PPZ extent
BD228: Sullivan's Cove PPZ extent
BD229: Sullivan's Cove PPZ extent
BD230: Sullivan's Cove PPZ extent
BD231: Sullivan's Cove PPZ extent
BD232: Sullivan's Cove PPZ extent
BD233: Sullivan's Cove PPZ extent
BD234: Sullivan's Cove PPZ extent
BD235: Sullivan's Cove PPZ extent
BD236: Sullivan's Cove PPZ extent
BD237: Sullivan's Cove PPZ extent
BD238: Sullivan's Cove PPZ extent
BD239: Sullivan's Cove PPZ extent
BD240: Sullivan's Cove PPZ extent
BD241: Sullivan's Cove PPZ extent
BD242: Sullivan's Cove PPZ extent
BD243: Sullivan's Cove PPZ extent
BD244: Sullivan's Cove PPZ extent
BD245: Sullivan's Cove PPZ extent
BD246: Sullivan's Cove PPZ extent
BD247: Sullivan's Cove PPZ extent
BD248: Sullivan's Cove PPZ extent
BD249: Sullivan's Cove PPZ extent
BD250: Sullivan's Cove PPZ extent
BD251: Sullivan's Cove PPZ extent
BD252: Sullivan's Cove PPZ extent
BD253: Sullivan's Cove PPZ extent
BD254: Sullivan's Cove PPZ extent
BD255: Sullivan's Cove PPZ extent
BD256: Sullivan's Cove PPZ extent
BD257: Sullivan's Cove PPZ extent
BD258: Sullivan's Cove PPZ extent
BD259: Sullivan's Cove PPZ extent
BD260: Sullivan's Cove PPZ extent
BD261: Sullivan's Cove PPZ extent
BD262: Sullivan's Cove PPZ extent
BD263: Sullivan's Cove PPZ extent
BD264: Sullivan's Cove PPZ extent
BD265: Sullivan's Cove PPZ extent
BD266: Sullivan's Cove PPZ extent
BD267: Sullivan's Cove PPZ extent
BD268: Sullivan's Cove PPZ extent
BD269: Sullivan's Cove PPZ extent
BD270: Sullivan's Cove PPZ extent
BD271: Sullivan's Cove PPZ extent
BD272: Sullivan's Cove PPZ extent
BD273: Sullivan's Cove PPZ extent
BD274: Sullivan's Cove PPZ extent
BD275: Sullivan's Cove PPZ extent
BD276: Sullivan's Cove PPZ extent
BD277: Sullivan's Cove PPZ extent
BD278: Sullivan's Cove PPZ extent
BD279: Sullivan's Cove PPZ extent
BD280: Sullivan's Cove PPZ extent
BD281: Sullivan's Cove PPZ extent
BD282: Sullivan's Cove PPZ extent
BD283: Sullivan's Cove PPZ extent
BD284: Sullivan's Cove PPZ extent
BD285: Sullivan's Cove PPZ extent
BD286: Sullivan's Cove PPZ extent
BD287: Sullivan's Cove PPZ extent
BD288: Sullivan's Cove PPZ extent
BD289: Sullivan's Cove PPZ extent
BD290: Sullivan's Cove PPZ extent
BD291: Sullivan's Cove PPZ extent
BD292: Sullivan's Cove PPZ extent
BD293: Sullivan's Cove PPZ extent
BD294: Sullivan's Cove PPZ extent
BD295: Sullivan's Cove PPZ extent
BD296: Sullivan's Cove PPZ extent
BD297: Sullivan's Cove PPZ extent
BD298: Sullivan's Cove PPZ extent
BD299: Sullivan's Cove PPZ extent
BD300: Sullivan's Cove PPZ extent

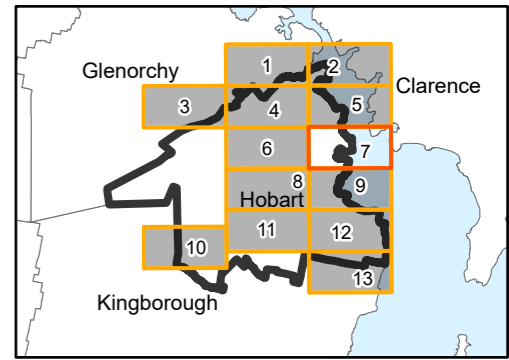


**Map 7 of 15**

Coordinate System: GDA 94 MGA Zone 55

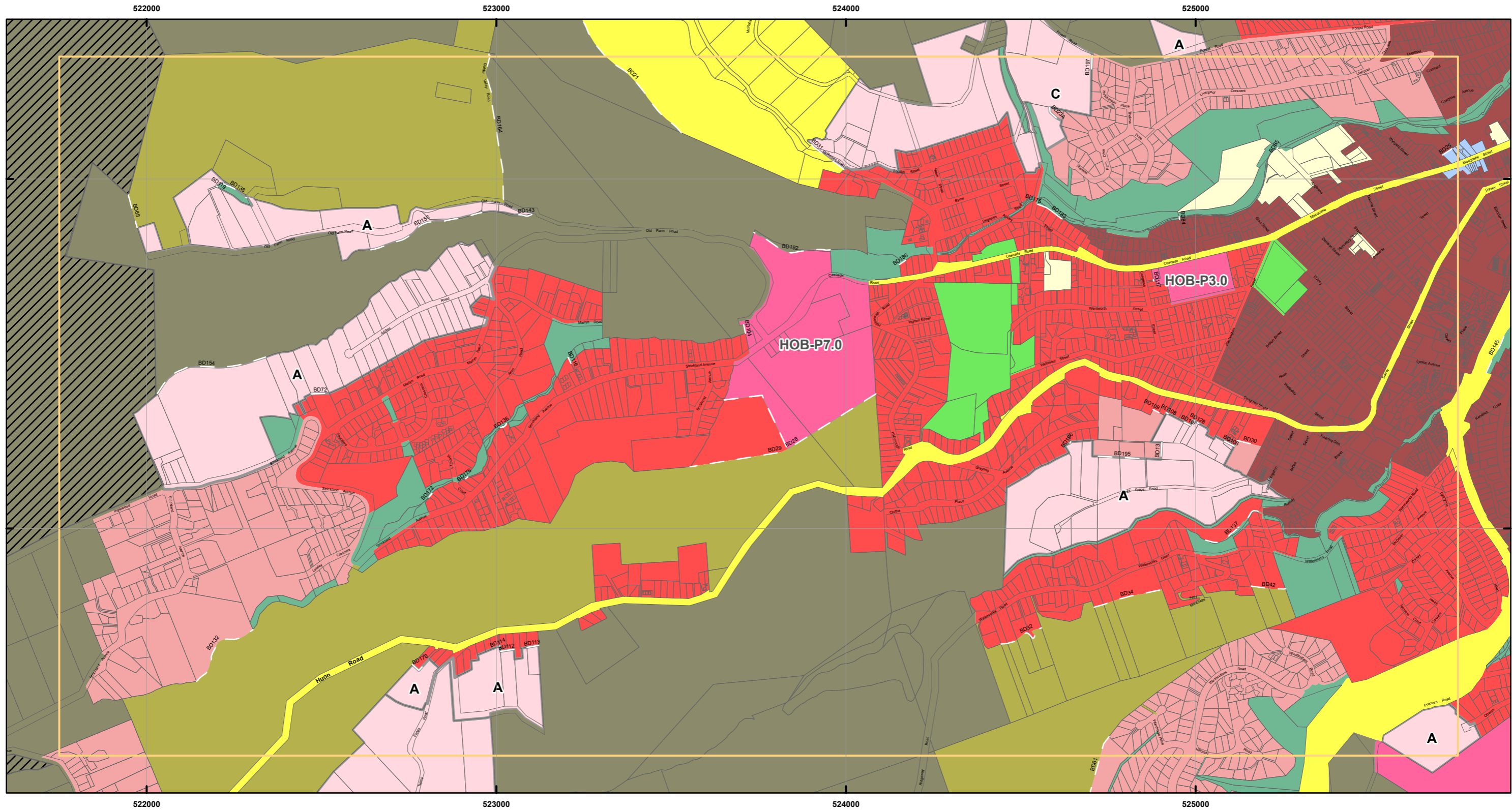
Zone data from Hobart City Council  
Base topographic data from the LIST © State of Tasmania  
Land title information current as at 22/03/2023

Date: 17/04/2023





# Tasmanian Planning Scheme - Zones - Hobart Local Provisions Schedule



Zones Legend		
General Residential	Central Business	Community Purpose
Inner Residential	Commercial	Recreation
Low Density Residential	Light Industrial	Open Space
Rural Living	Landscape Conservation	Particular Purpose
Urban Mixed Use	Environmental Management	Property Parcels
Local Business	Port and Marine	Site-specific Qualifications (SSQs)
General Business	Utilities	LPS Boundary

**Zone Boundary Definitions Legend**

BD104 Between 2000001 and 2027011 to 1017001  
 BD105 Between 20001 and 1017011 to 1018001  
 BD106 Between 1020002 and 700001  
 BD107 Between 700002 and 1000001 to 1010001  
 BD108 Between 1000002 and 1000001 to 1010001  
 BD109 Between 1000002 and 1000001 to 1010001  
 BD110 Between 1000002 and 1000001 to 1010001  
 BD111 Between 1000002 and 1000001 to 1010001  
 BD112 Between 1000002 and 1000001 to 1010001  
 BD113 Between 1000002 and 1000001 to 1010001  
 BD114 Between 1000002 and 1000001 to 1010001  
 BD115 Between 1000002 and 1000001 to 1010001  
 BD116 Between 1000002 and 1000001 to 1010001  
 BD117 Between 1000002 and 1000001 to 1010001  
 BD118 Between 1000002 and 1000001 to 1010001  
 BD119 Between 1000002 and 1000001 to 1010001  
 BD120 Between 1000002 and 1000001 to 1010001  
 BD121 Between 1000002 and 1000001 to 1010001  
 BD122 Between 1000002 and 1000001 to 1010001  
 BD123 Between 1000002 and 1000001 to 1010001  
 BD124 Between 1000002 and 1000001 to 1010001  
 BD125 Between 1000002 and 1000001 to 1010001  
 BD126 Between 1000002 and 1000001 to 1010001  
 BD127 Between 1000002 and 1000001 to 1010001  
 BD128 Between 1000002 and 1000001 to 1010001  
 BD129 Between 1000002 and 1000001 to 1010001  
 BD130 Between 1000002 and 1000001 to 1010001  
 BD131 Between 1000002 and 1000001 to 1010001  
 BD132 Between 1000002 and 1000001 to 1010001  
 BD133 Between 1000002 and 1000001 to 1010001  
 BD134 Between 1000002 and 1000001 to 1010001  
 BD135 Between 1000002 and 1000001 to 1010001  
 BD136 Between 1000002 and 1000001 to 1010001  
 BD137 Between 1000002 and 1000001 to 1010001  
 BD138 Between 1000002 and 1000001 to 1010001  
 BD139 Between 1000002 and 1000001 to 1010001  
 BD140 Between 1000002 and 1000001 to 1010001  
 BD141 Between 1000002 and 1000001 to 1010001  
 BD142 Between 1000002 and 1000001 to 1010001  
 BD143 Between 1000002 and 1000001 to 1010001  
 BD144 Between 1000002 and 1000001 to 1010001  
 BD145 Between 1000002 and 1000001 to 1010001  
 BD146 Between 1000002 and 1000001 to 1010001  
 BD147 Between 1000002 and 1000001 to 1010001  
 BD148 Between 1000002 and 1000001 to 1010001  
 BD149 Between 1000002 and 1000001 to 1010001  
 BD150 Between 1000002 and 1000001 to 1010001  
 BD151 Between 1000002 and 1000001 to 1010001  
 BD152 Between 1000002 and 1000001 to 1010001  
 BD153 Between 1000002 and 1000001 to 1010001  
 BD154 Between 1000002 and 1000001 to 1010001  
 BD155 Between 1000002 and 1000001 to 1010001  
 BD156 Between 1000002 and 1000001 to 1010001  
 BD157 Between 1000002 and 1000001 to 1010001  
 BD158 Between 1000002 and 1000001 to 1010001  
 BD159 Between 1000002 and 1000001 to 1010001  
 BD160 Between 1000002 and 1000001 to 1010001  
 BD161 Between 1000002 and 1000001 to 1010001  
 BD162 Between 1000002 and 1000001 to 1010001  
 BD163 Between 1000002 and 1000001 to 1010001  
 BD164 Between 1000002 and 1000001 to 1010001  
 BD165 Between 1000002 and 1000001 to 1010001  
 BD166 Between 1000002 and 1000001 to 1010001  
 BD167 Between 1000002 and 1000001 to 1010001  
 BD168 Between 1000002 and 1000001 to 1010001  
 BD169 Between 1000002 and 1000001 to 1010001  
 BD170 Between 1000002 and 1000001 to 1010001  
 BD171 Between 1000002 and 1000001 to 1010001  
 BD172 Between 1000002 and 1000001 to 1010001  
 BD173 Between 1000002 and 1000001 to 1010001  
 BD174 Between 1000002 and 1000001 to 1010001  
 BD175 Between 1000002 and 1000001 to 1010001  
 BD176 Between 1000002 and 1000001 to 1010001  
 BD177 Between 1000002 and 1000001 to 1010001  
 BD178 Between 1000002 and 1000001 to 1010001  
 BD179 Between 1000002 and 1000001 to 1010001  
 BD180 Between 1000002 and 1000001 to 1010001  
 BD181 Between 1000002 and 1000001 to 1010001  
 BD182 Between 1000002 and 1000001 to 1010001  
 BD183 Between 1000002 and 1000001 to 1010001  
 BD184 Between 1000002 and 1000001 to 1010001  
 BD185 Between 1000002 and 1000001 to 1010001  
 BD186 Between 1000002 and 1000001 to 1010001  
 BD187 Between 1000002 and 1000001 to 1010001  
 BD188 Between 1000002 and 1000001 to 1010001  
 BD189 Between 1000002 and 1000001 to 1010001  
 BD190 Between 1000002 and 1000001 to 1010001  
 BD191 Between 1000002 and 1000001 to 1010001  
 BD192 Between 1000002 and 1000001 to 1010001  
 BD193 Between 1000002 and 1000001 to 1010001  
 BD194 Between 1000002 and 1000001 to 1010001  
 BD195 Between 1000002 and 1000001 to 1010001  
 BD196 Between 1000002 and 1000001 to 1010001  
 BD197 Between 1000002 and 1000001 to 1010001  
 BD198 Between 1000002 and 1000001 to 1010001  
 BD199 Between 1000002 and 1000001 to 1010001  
 BD200 Between 1000002 and 1000001 to 1010001  
 BD201 Between 1000002 and 1000001 to 1010001  
 BD202 Between 1000002 and 1000001 to 1010001  
 BD203 Between 1000002 and 1000001 to 1010001  
 BD204 Between 1000002 and 1000001 to 1010001  
 BD205 Between 1000002 and 1000001 to 1010001  
 BD206 Between 1000002 and 1000001 to 1010001  
 BD207 Between 1000002 and 1000001 to 1010001  
 BD208 Between 1000002 and 1000001 to 1010001  
 BD209 Between 1000002 and 1000001 to 1010001  
 BD210 Between 1000002 and 1000001 to 1010001  
 BD211 Between 1000002 and 1000001 to 1010001  
 BD212 Between 1000002 and 1000001 to 1010001  
 BD213 Between 1000002 and 1000001 to 1010001  
 BD214 Between 1000002 and 1000001 to 1010001  
 BD215 Between 1000002 and 1000001 to 1010001  
 BD216 Between 1000002 and 1000001 to 1010001  
 BD217 Between 1000002 and 1000001 to 1010001  
 BD218 Between 1000002 and 1000001 to 1010001  
 BD219 Between 1000002 and 1000001 to 1010001  
 BD220 Between 1000002 and 1000001 to 1010001  
 BD221 Between 1000002 and 1000001 to 1010001  
 BD222 Between 1000002 and 1000001 to 1010001  
 BD223 Between 1000002 and 1000001 to 1010001  
 BD224 Between 1000002 and 1000001 to 1010001  
 BD225 Between 1000002 and 1000001 to 1010001  
 BD226 Between 1000002 and 1000001 to 1010001  
 BD227 Between 1000002 and 1000001 to 1010001  
 BD228 Between 1000002 and 1000001 to 1010001  
 BD229 Between 1000002 and 1000001 to 1010001  
 BD230 Between 1000002 and 1000001 to 1010001  
 BD231 Between 1000002 and 1000001 to 1010001  
 BD232 Between 1000002 and 1000001 to 1010001  
 BD233 Between 1000002 and 1000001 to 1010001  
 BD234 Between 1000002 and 1000001 to 1010001  
 BD235 Between 1000002 and 1000001 to 1010001  
 BD236 Between 1000002 and 1000001 to 1010001  
 BD237 Between 1000002 and 1000001 to 1010001  
 BD238 Between 1000002 and 1000001 to 1010001  
 BD239 Between 1000002 and 1000001 to 1010001  
 BD240 Between 1000002 and 1000001 to 1010001  
 BD241 Between 1000002 and 1000001 to 1010001  
 BD242 Between 1000002 and 1000001 to 1010001  
 BD243 Between 1000002 and 1000001 to 1010001  
 BD244 Between 1000002 and 1000001 to 1010001  
 BD245 Between 1000002 and 1000001 to 1010001  
 BD246 Between 1000002 and 1000001 to 1010001  
 BD247 Between 1000002 and 1000001 to 1010001  
 BD248 Between 1000002 and 1000001 to 1010001  
 BD249 Between 1000002 and 1000001 to 1010001  
 BD250 Between 1000002 and 1000001 to 1010001  
 BD251 Between 1000002 and 1000001 to 1010001  
 BD252 Between 1000002 and 1000001 to 1010001  
 BD253 Between 1000002 and 1000001 to 1010001  
 BD254 Between 1000002 and 1000001 to 1010001  
 BD255 Between 1000002 and 1000001 to 1010001  
 BD256 Between 1000002 and 1000001 to 1010001  
 BD257 Between 1000002 and 1000001 to 1010001  
 BD258 Between 1000002 and 1000001 to 1010001  
 BD259 Between 1000002 and 1000001 to 1010001  
 BD260 Between 1000002 and 1000001 to 1010001  
 BD261 Between 1000002 and 1000001 to 1010001  
 BD262 Between 1000002 and 1000001 to 1010001  
 BD263 Between 1000002 and 1000001 to 1010001  
 BD264 Between 1000002 and 1000001 to 1010001  
 BD265 Between 1000002 and 1000001 to 1010001  
 BD266 Between 1000002 and 1000001 to 1010001  
 BD267 Between 1000002 and 1000001 to 1010001  
 BD268 Between 1000002 and 1000001 to 1010001  
 BD269 Between 1000002 and 1000001 to 1010001  
 BD270 Between 1000002 and 1000001 to 1010001  
 BD271 Between 1000002 and 1000001 to 1010001  
 BD272 Between 1000002 and 1000001 to 1010001  
 BD273 Between 1000002 and 1000001 to 1010001  
 BD274 Between 1000002 and 1000001 to 1010001  
 BD275 Between 1000002 and 1000001 to 1010001  
 BD276 Between 1000002 and 1000001 to 1010001  
 BD277 Between 1000002 and 1000001 to 1010001  
 BD278 Between 1000002 and 1000001 to 1010001  
 BD279 Between 1000002 and 1000001 to 1010001  
 BD280 Between 1000002 and 1000001 to 1010001  
 BD281 Between 1000002 and 1000001 to 1010001  
 BD282 Between 1000002 and 1000001 to 1010001  
 BD283 Between 1000002 and 1000001 to 1010001  
 BD284 Between 1000002 and 1000001 to 1010001  
 BD285 Between 1000002 and 1000001 to 1010001  
 BD286 Between 1000002 and 1000001 to 1010001  
 BD287 Between 1000002 and 1000001 to 1010001  
 BD288 Between 1000002 and 1000001 to 1010001  
 BD289 Between 1000002 and 1000001 to 1010001  
 BD290 Between 1000002 and 1000001 to 1010001  
 BD291 Between 1000002 and 1000001 to 1010001  
 BD292 Between 1000002 and 1000001 to 1010001  
 BD293 Between 1000002 and 1000001 to 1010001  
 BD294 Between 1000002 and 1000001 to 1010001  
 BD295 Between 1000002 and 1000001 to 1010001  
 BD296 Between 1000002 and 1000001 to 1010001  
 BD297 Between 1000002 and 1000001 to 1010001  
 BD298 Between 1000002 and 1000001 to 1010001  
 BD299 Between 1000002 and 1000001 to 1010001  
 BD300 Between 1000002 and 1000001 to 1010001

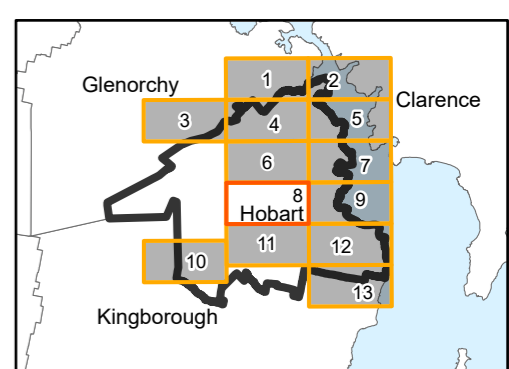
**Map 8 of 15**

0 100 200 300 400 500  
Metres

Coordinate System: GDA 94 MGA Zone 55

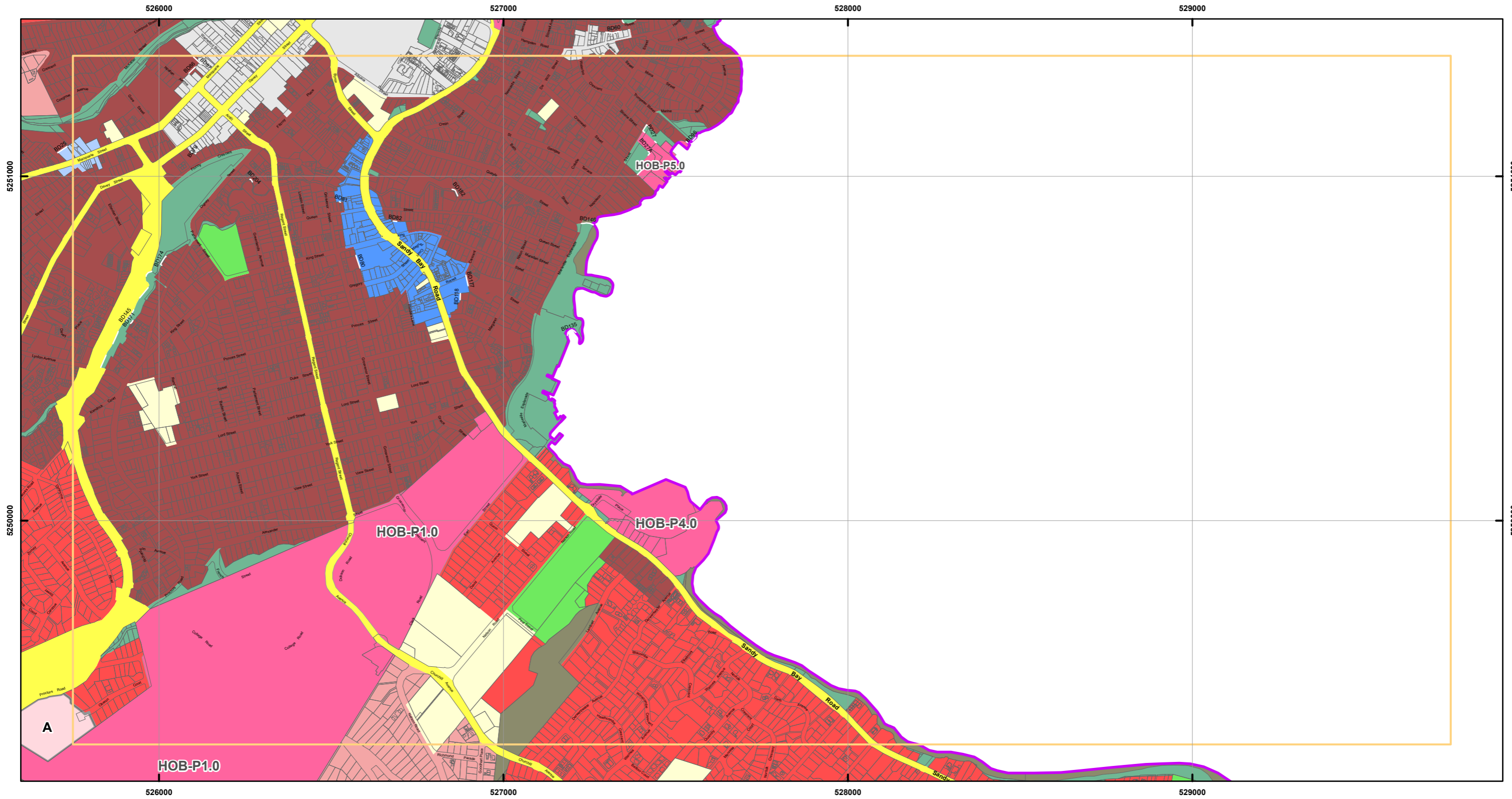
Zone data from Hobart City Council  
 Base topographic data from the LIST © State of Tasmania  
 Land title information current as at 22/03/2023

Date: 17/04/2023





# Tasmanian Planning Scheme - Zones - Hobart Local Provisions Schedule



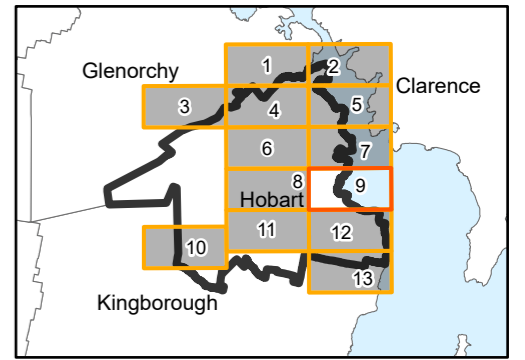
Zones Legend			Zone Boundary Definitions Legend	
	General Residential		Central Business	
	Inner Residential		Commercial	
	Low Density Residential		Light Industrial	
	Rural Living		Landscape Conservation	
	Urban Mixed Use		Environmental Management	
	Local Business		Port and Marine	
	General Business		Utilities	
			Property Parcels	
			Site-specific Qualifications (SSQs)	
			LPS Boundary	

**Map 9 of 15**

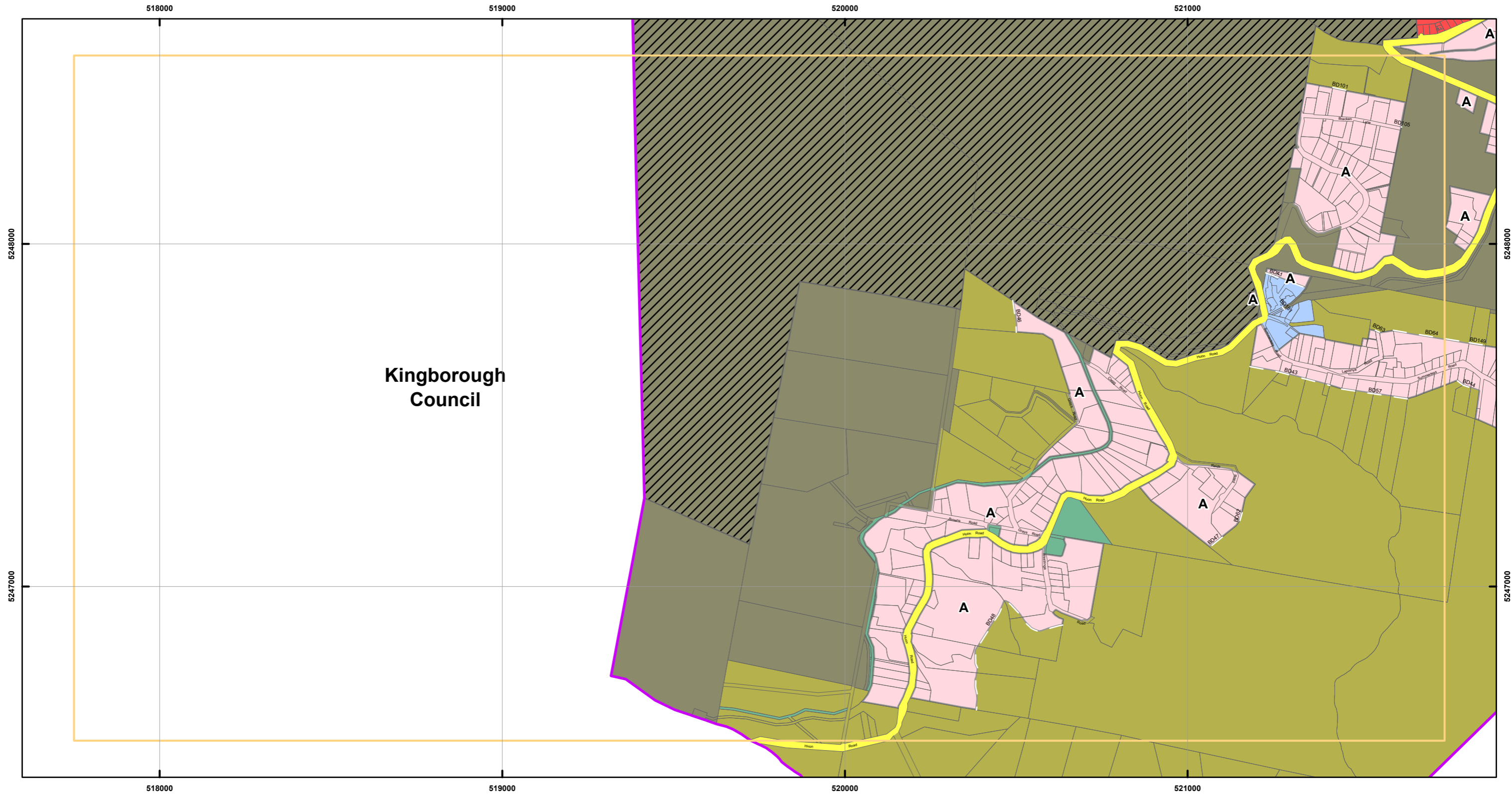
Coordinate System: GDA 94 MGA Zone 55

Zone data from Hobart City Council  
Base topographic data from the LIST © State of Tasmania  
Land title information current as at 22/03/2023

Date: 17/04/2023



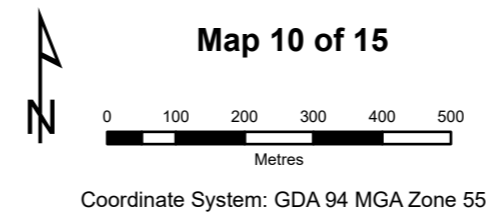
# Tasmanian Planning Scheme - Zones - Hobart Local Provisions Schedule



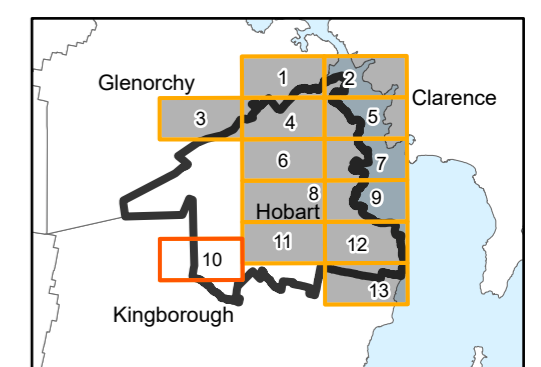
Kingborough  
Council

Zones Legend		
General Residential	Central Business	Community Purpose
Inner Residential	Commercial	Recreation
Low Density Residential	Light Industrial	Open Space
Rural Living	Landscape Conservation	Particular Purpose
Urban Mixed Use	Environmental Management	Property Parcels
Local Business	Port and Marine	Site-specific Qualifications (SSQs)
General Business	Utilities	LPS Boundary

Zone Boundary Definitions Legend
BD101, Between NW cnr 199396/1 and NE cnr 129922/1
BD105, From S bdy (road frontage) of 87821/25 to intersection with bdy 40232/1
BD149, Between 13459/5 to the W bdy of 20481/1
BD181, From 95905/1 to 166593/3
BD41, 15.5m S of NW cnr on W bdy 166593 to first change of angle on E bdy 166593, 38.74m S of NE cnr of property.
BD43, Between 27442/1 and 49138/1
BD44, Between 114583/6 and E bdy of 7949/9
BD46, Line following the 500m contour within 37482/1.
BD47, SW bdy 152659/4 from E side of the right of way, distance of 215.5 to SE. Then NE to S most pt of 50615/1.
BD48, A line following the 400m contour from the S bdy of 54102/1, N & E to Westringa Rd
BD57, Between 49136/1 and 248710/1
BD62, Between S cnr of 152588/3 and the W cnr of 50615/1
BD63, Between SW cnr of 60107/23 and the NW cnr of 24292/2
BD64, From the NE bdy of 197210/1 to the E bdy of 175588/1

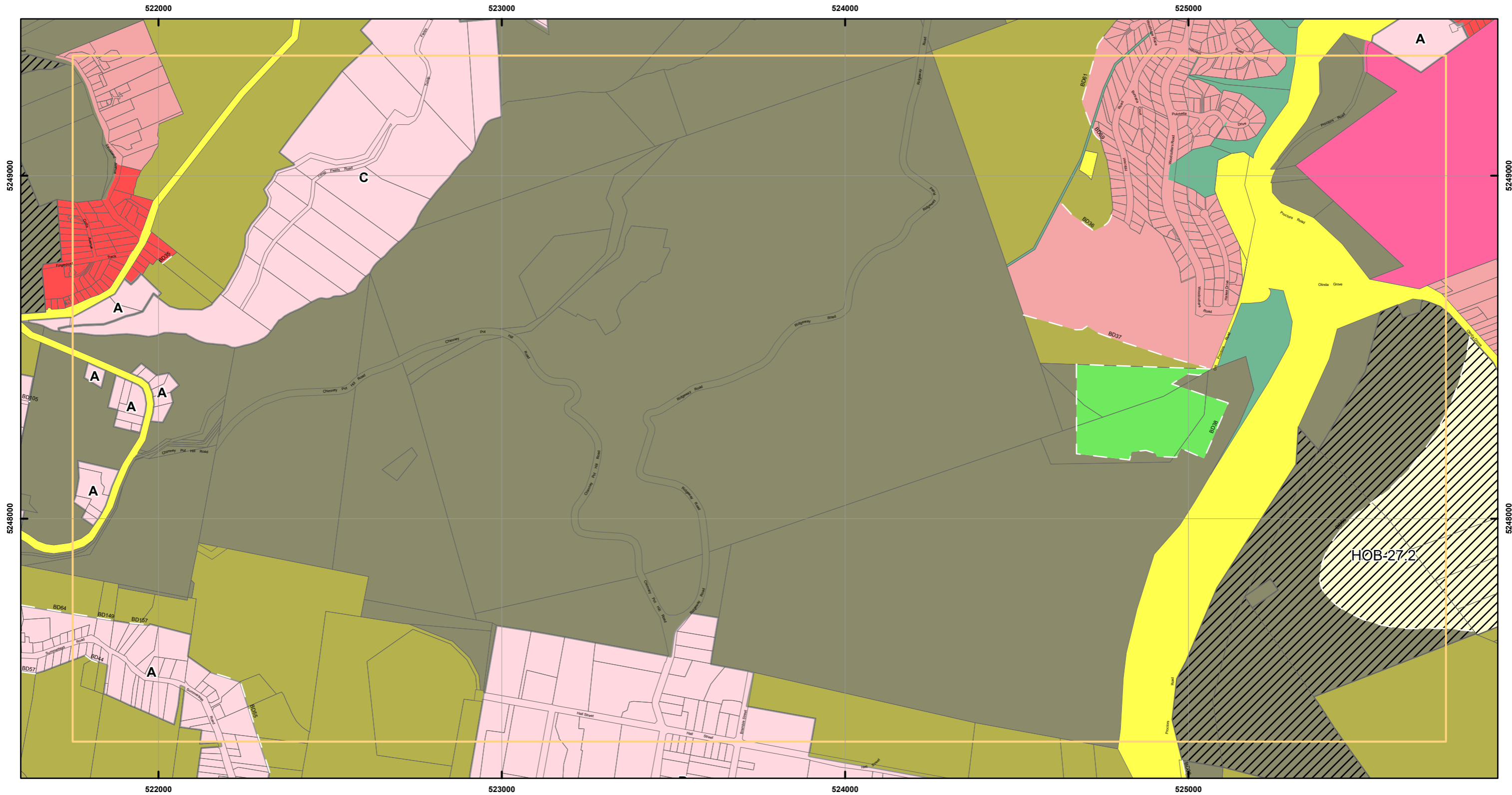


Zone data from Hobart City Council  
Base topographic data from the LIST © State of Tasmania  
Land title information current as at 22/03/2023  
Date: 17/04/2023





# Tasmanian Planning Scheme - Zones - Hobart Local Provisions Schedule



Zones Legend		
General Residential	Central Business	Community Purpose
Inner Residential	Commercial	Recreation
Low Density Residential	Light Industrial	Open Space
Rural Living	Landscape Conservation	Particular Purpose
Urban Mixed Use	Environmental Management	Property Parcels
Local Business	Port and Marine	Site-specific Qualifications (SSQs)
General Business	Utilities	LPS Boundary

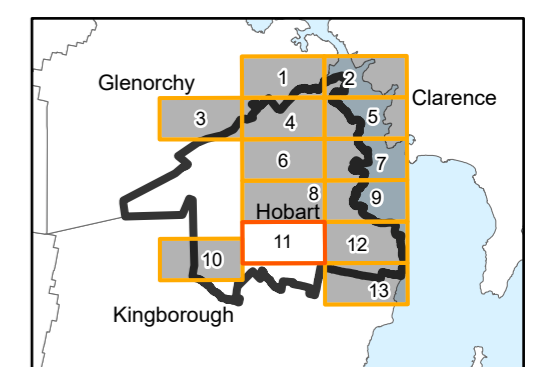
Zone Boundary Definitions Legend
BD105, From S bdy (road frontage) of 87821/25 to intersection with bdy 40232/1
BD149, Between 13459/5 to the W bdy of 20481/1
BD157, From the N bdy of 13459/5 to the intersection of the W bdy of 13459/1
BD35, From SW of the E bdy of 202251/1 to SW bdy of 202252/1.
BD36, A line following the 350m contour located on the E bdy of 133963/1
BD37, From SE cnr of 163562/1 pt on W bdy of lot, located 148m from the SW cnr of lot.
BD38, Lease bdy as delineated as 130098/1
BD44, Between 114583/6 and E bdy of 7949/9
BD50, Start SE bdy 203461/53, 82.2m SE from W most pt of lot. Then via (525755.8mE, 5247678.8mN); (525696.2mE, 5247679.5mN); (525622mE, 5247680.8mN); (525580.4mE, 5247686.3mN); (525542.5mE, 5247695.1mN); (525509.4mE, 5247705.2mN); (
BD55, Between 233752/1 and 182100/1
BD57, Between 49136/1 and 248710/1
BD59, Along the 350m contour line between 171472/26 and 133963/1
BD61, From W cnr 122606/73 SW for 22m via NW bdy. Then SW to 524688.5mE, 5249209.3mN. Then W bdy 133963/1 (233.5m from Smost cnr 122606/75)
BD64, From the NE bdy of 197210/1 to the E bdy of 175588/1
BD66, Between NW cnr of 154756/1 and the SW cnr PID 1873188 abutting a road reservation

**Map 11 of 15**

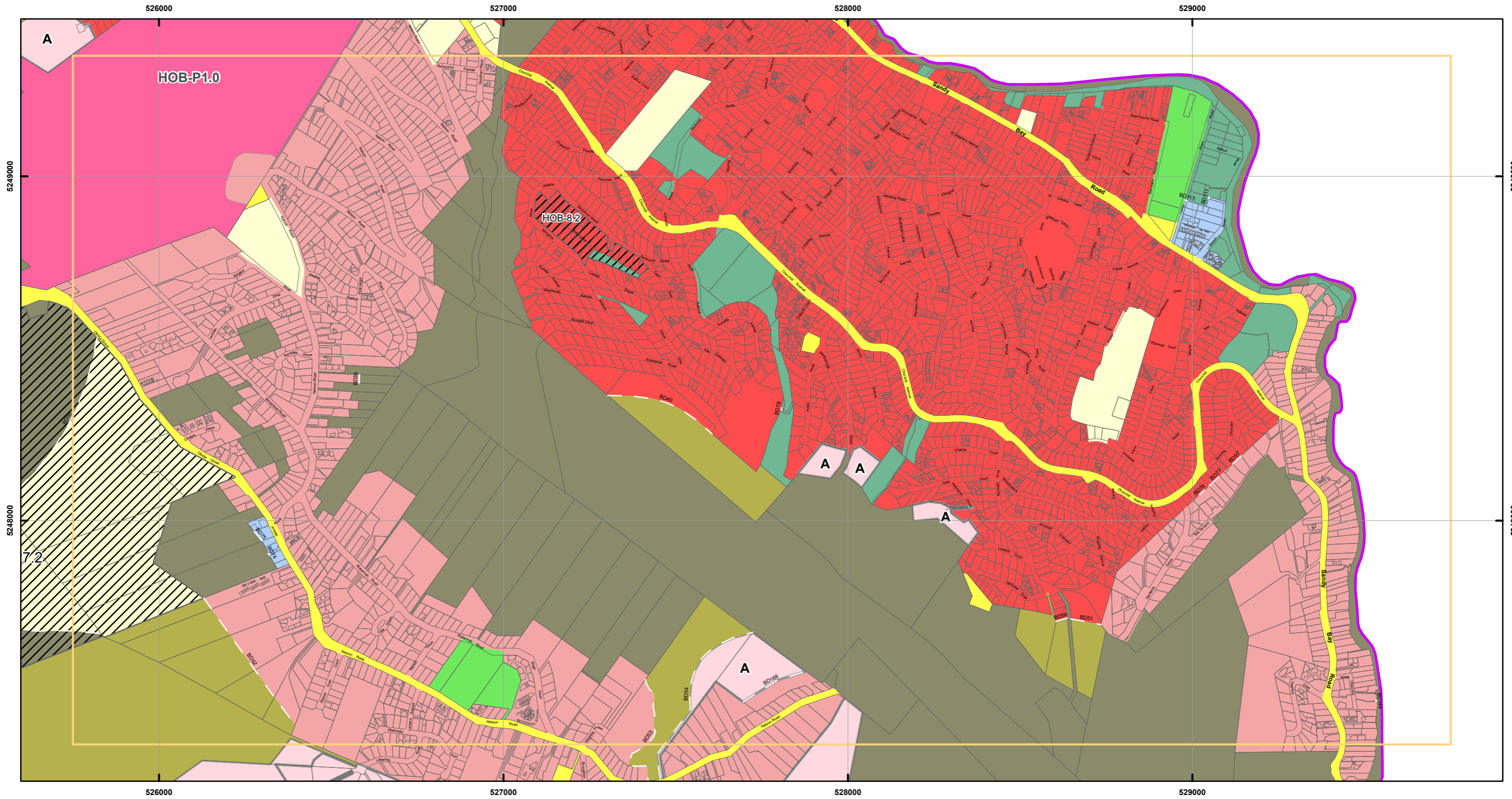
Coordinate System: GDA 94 MGA Zone 55

Zone data from Hobart City Council  
Base topographic data from the LIST © State of Tasmania  
Land title information current as at 22/03/2023

Date: 17/04/2023

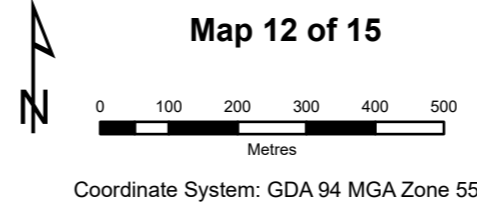


# Tasmanian Planning Scheme - Zones - Hobart Local Provisions Schedule

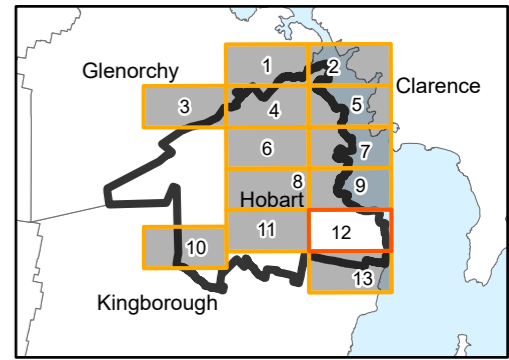


Zones Legend		
	General Residential	
	Inner Residential	
	Low Density Residential	
	Rural Living	
	Urban Mixed Use	
	Local Business	
	General Business	
	Central Business	
	Commercial	
	Light Industrial	
	Landscape Conservation	
	Environmental Management	
	Port and Marine	
	Utilities	

Zone Boundary Definitions Legend
BD110. Between 78758/3 and 21996/3 to 24941/31
BD111. Between 21996/3 and 137878/1 to 233369/1
BD144. Watercourse outlet to River Derwent
BD189. Parallel to the lots Horning Nelson Road, 64078/1 to 64078/9 and 226205/8 offset by 48m
BD39. N bdy 127472/2, 11.6m W of E most point of bdy. Join to S bdy 127472/2, 97.7m west of E most point of bdy.
BD40. 6.7m SE of W pt on SW bdy 159827/1 to W end S bdy 161988/105 via 527362.2mE, 5248362.1mN, 527406.4mE, 5248397.2mN, 527436.5mE, 5248353.3mN, 527477.5mE, 5248340.4mN, 527517.4mE, 5248321.7mN, 527556.8mE, 5248294.3mN, 527583.2mE, 5248271.4mN
BD50. Start SE bdy 20346/1/53, 82.2m SE from W most pt of lot. Then via (525795.8mE, 5247678.8mN), (525686.3mE, 5247678.8mN), (525622.2mE, 5247980.6mN), (525580.4mE, 5247686.3mN), (525542.5mE, 5247695.1mN), (525509.4mE, 5247705.2mN).
BD51. From 122716/20 to 48805/7
BD52. From pt on E bdy 36039/2 located 33m N of most S point of bdy to most S pt of 159749/1.
BD53. From 17152/23, following a line 20m W of creek to 2788/9 along back bdy to Nelson Rd
BD54. E-most pt 29096/7/1 then SW via 52766/7, 1mE5247659.8mN, 527625.6mE5247460.4mN, 527594.3mE5247618.3mN, 527573.3mE5247597.8mN, 527555.3mE5247564.8mN, 527545.1mE5247528.8mN, 527541.2mE5247495.6mN, 527541.2mE5247478mN.
BD56. From 48805/7 to 15938/1
BD74. Between the W cr of 157558/1 and the S cr of 63884/3
BD75. Between the W cr of 63884/4 and the S cr of 163375/2
BD76. Between the W cr of 63180/3 and the S cr of 61183/1
BD77. Between the W cr of 61183/1 and the S cr of 80017/66
BD78. Between the N cr of 159761/103 and the SW cr of 159761/103 across the access for 161988/105
BD97. Between SE cr 80017/66 and S cr 80017/63

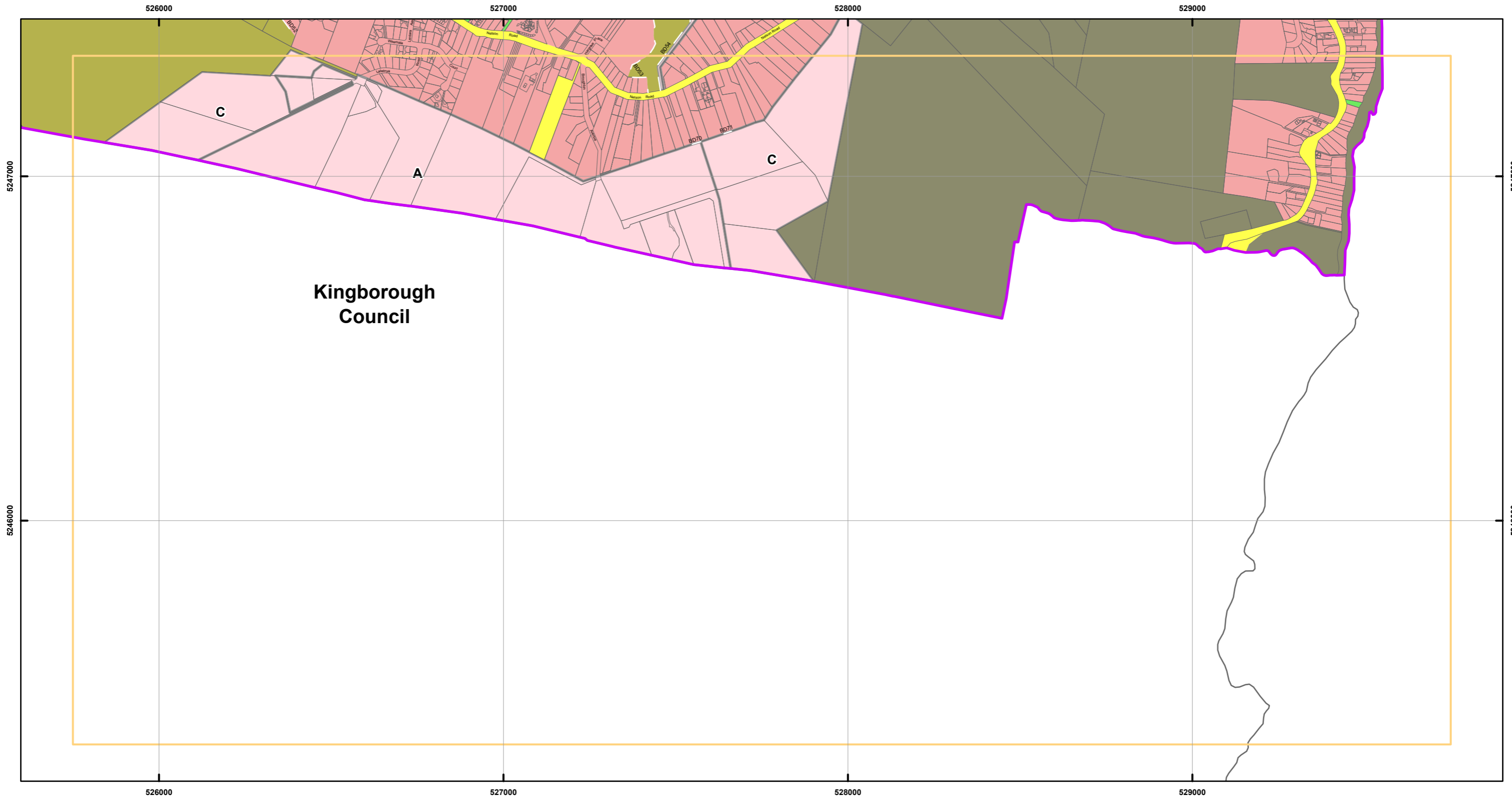


Map 12 of 15  
 Coordinate System: GDA 94 MGA Zone 55  
 Zone data from Hobart City Council  
 Base topographic data from the LIST © State of Tasmania  
 Land title information current as at 22/03/2023  
 Date: 17/04/2023





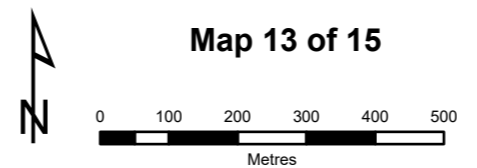
# Tasmanian Planning Scheme - Zones - Hobart Local Provisions Schedule



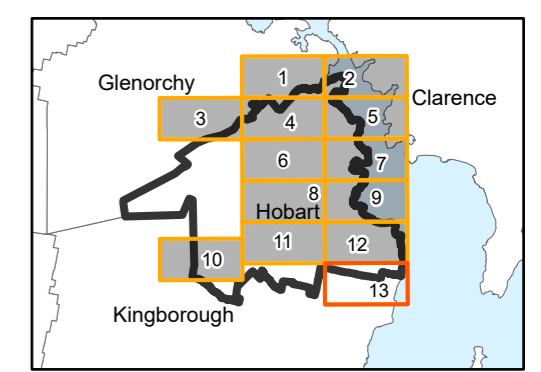
Zones Legend			
	General Residential		Community Purpose
	Inner Residential		Recreation
	Low Density Residential		Open Space
	Rural Living		Light Industrial
	Urban Mixed Use		Landscape Conservation
	Local Business		Environmental Management
	General Business		Port and Marine
			Utilities

Zone Boundary Definitions Legend	
	Particular Purpose
	Property Parcels
	Site-specific Qualifications (SSQs)
	LPS Boundary

BD52, From pt on E bdy 36039/2 located 33m N of most S point of bdy, to most S pt of 156749/1.  
 BD53, From 171320/3, following a line 25m W of creek to 12788/6 along back bdy to Nelson Rd  
 BD54, E-most pt 250967/1 then SW via 527667.1mE5247659.8mN; 527625.6mE5247640.4mN;  
 527594.3mE5247618.3mN; 527573.3mE5247597.8mN; 527555.3mE5247564.8mN;  
 527545.1mE5247528.9mN; 527541.2mE5247495.6mN; 527541.2mE5247478mN;  
 527541.9mE5247449.3mN. via line  
 BD70, Between the SE cnr of 250917/1 and the S cnr of 14235/2  
 BD71, Between the SE cnr of 198293/1 and the S cnr of 27914/5

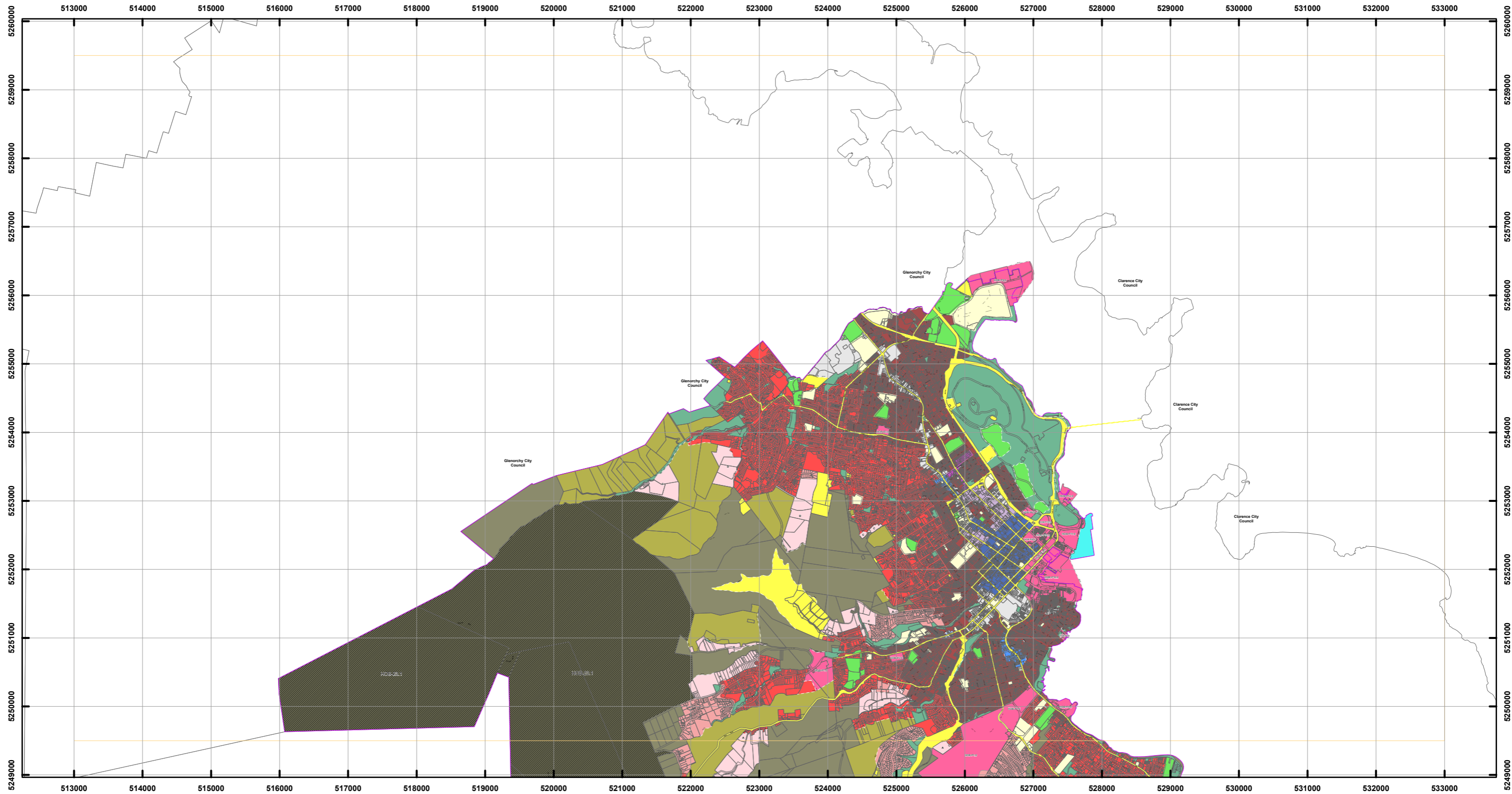


Zone data from Hobart City Council  
 Base topographic data from the LIST © State of Tasmania  
 Land title information current as at 22/03/2023  
 Date: 17/04/2023





# Tasmanian Planning Scheme - Zones - Hobart Local Provisions Schedule



Zones Legend		
	General Residential	
	Inner Residential	
	Low Density Residential	
	Rural Living	
	Urban Mixed Use	
	Local Business	
	General Business	
	Central Business	
	Commercial	
	Light Industrial	
	Landscape Conservation	
	Environmental Management	
	Port and Marine	
	Utilities	

Zone Boundary Definitions

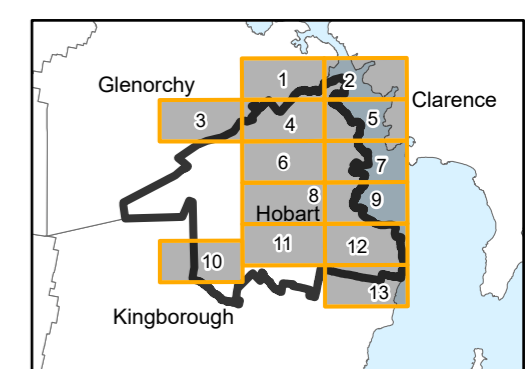
Notes Description
BD102 Between E cnr 134088/5 and S cnr 134088/4

**Map 14 of 15**

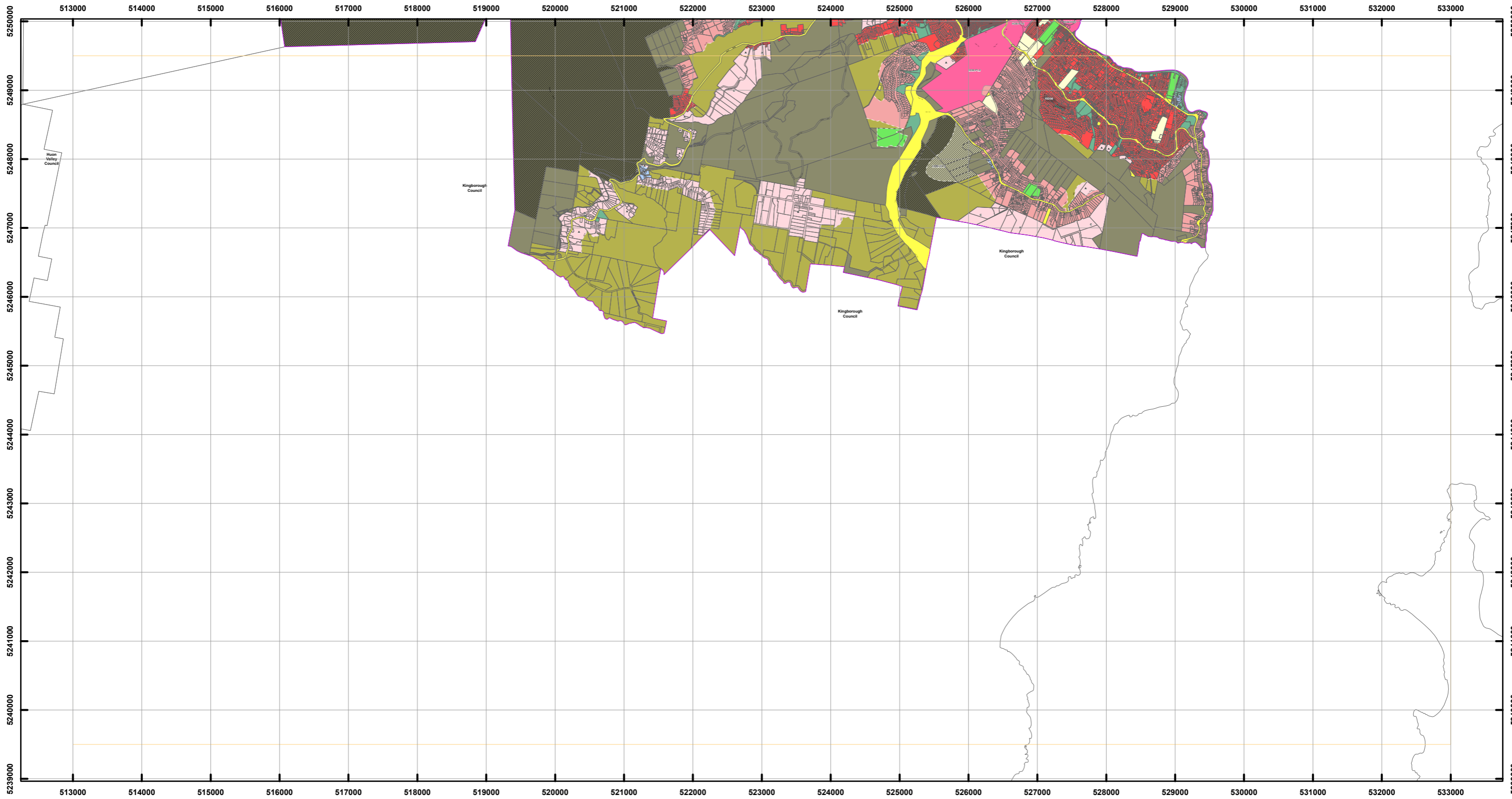
Coordinate System: GDA 94 MGA Zone 55

Zone data from Hobart City Council  
Base topographic data from the LIST © State of Tasmania  
Land title information current as at 22/03/2023

Date: 17/04/2023



# Tasmanian Planning Scheme - Zones - Hobart Local Provisions Schedule



Zones Legend		
General Residential	Central Business	Community Purpose
Inner Residential	Commercial	Recreation
Low Density Residential	Light Industrial	Open Space
Rural Living	Landscape Conservation	Particular Purpose
Urban Mixed Use	Environmental Management	Property Parcels
Local Business	Port and Marine	Site-specific Qualifications (SSQs)
General Business	Utilities	LPS Boundary

Zone Boundary Definitions	
Notes	Description
BD66	Between NW cnr of 154756/1 and the SW cnr PID 1873188 abutting a road reservation
BD45	Between 91836/1 and 233753/1
BD55	Between 233752/1 and 182100/1
BD58	From 102860/2 along 320m contour to 524167E 5247144N to 524249E 5247158N to 167642/8
BD49	Between 102860/2 and 144727/1

**Map 15 of 15**

Coordinate System: GDA 94 MGA Zone 55

Zone data from Hobart City Council  
Base topographic data from the LIST © State of Tasmania  
Land title information current as at 22/03/2023

Date: 17/04/2023

