



CITY OF HOBART

Advocacy Priorities

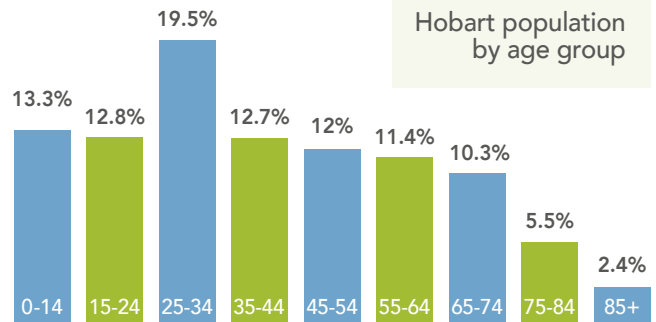
2023 – 24



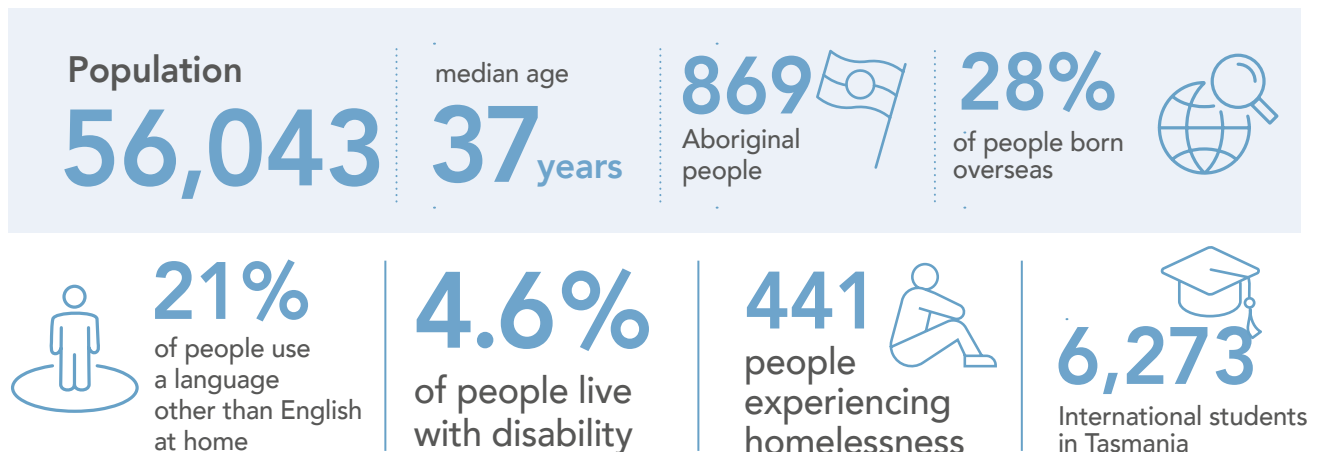
City of **HOBART**

HOBERT TODAY

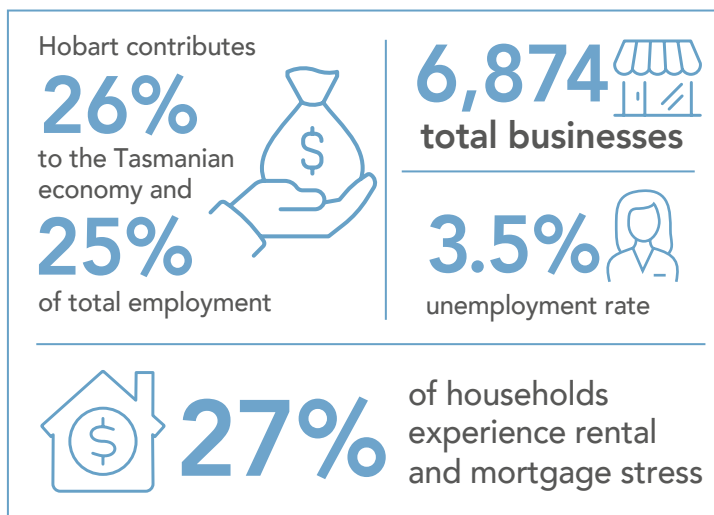
The diversity of the Hobart LGA is evident in our demographic and urban profile



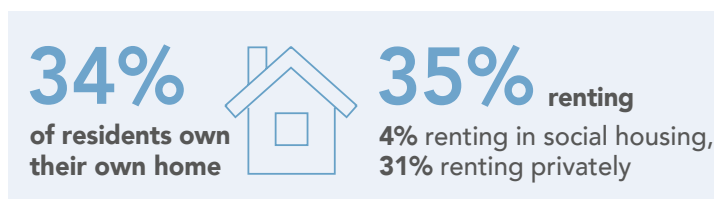
RESIDENT POPULATION



ECONOMIC DEVELOPMENT

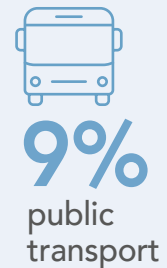
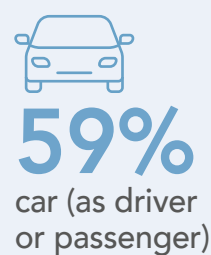


HOUSING TENURE



CITY TRANSPORT

Top methods that local workers* use to travel to work:



* Local workers are people employed in Hobart, regardless of where they live.

OUR ADVOCACY PRIORITIES

Housing

Addressing housing access and affordability in Hobart through practical partnerships that help realise the goals of state and national housing policies at a local level, with a focus on increasing the supply of appropriate housing within the City 4

Antarctic and science sectors

Boosting Hobart’s Antarctic and Science Sectors, and the City’s status as the premier gateway to Antarctica and the Southern Ocean, including through investment in Antarctic and science infrastructure..... 6

Climate action

Seeking an urgent acceleration of climate action and investment at a state and national level, to fund innovative, local programs to help the City undertake climate change mitigation and increase the City’s resilience to a changing climate 8

Community sports facilities

Investing in community-based sport facilities in the City that maximise the value of the proposed government investments in new sports infrastructure..... 10

Visitor destination and gateway

Unlocking the full potential of Hobart as a visitor destination and gateway, through investment in key sites and partnering with the City and local industry to develop a City-to-State Visitor Gateway Strategy 12

Transport options

Diversifying transport options through investment in transport infrastructure aimed at enhancing the City’s mobility and improving connectivity..... 14

HOUSING



Addressing housing access and affordability in Hobart through practical partnerships that help realise the goals of state and national housing policies at a local level, with a focus on increasing the supply of appropriate housing within the City.



The vision

The City of Hobart sees housing as a basic human right. Every Tasmanian deserves the safety and security of a home, and all levels of Government must coordinate to increase supply across the entire housing continuum.

When housing is secure and adequate there is a significant positive impact on health, employment, and education.

The City of Hobart is committed to increasing the supply of social and affordable housing.

The City's role in strategic land use planning through our Neighbourhood Plans will be critical to identify the strategic sites across the City's neighbourhoods where housing supply can be increased.

What we will do

- Work with developers to identify development opportunities to increase the supply of appropriate and affordable housing across the city.
- Facilitate partnerships between governments, industry, community and the housing sector to deliver innovative housing solutions.
- Undertake analysis to understand the extent of and reasons for delays between development approval and completion to determine whether more can be done to expedite this process.



The ask

Call on the Tasmanian Government to:

- Amend the Tasmanian Planning Scheme to allow local government more scope to regulate short stay accommodation approvals within their municipality.
- Maximise the priorities identified by National Cabinet, for more secure and affordable housing, including for renters.
- Implement a formal Mandatory Inclusionary Zoning (MIZ) mechanism into the Land Use Planning and Approvals Act.

- Explore the benefits and challenges of developer contributions that enhance community and economic outcomes for the state.

Call on the Australian Government to:

- Ensure adequate provision of appropriate social and affordable housing as well as specialist emergency accommodation and supported housing models in our city.

ANTARCTIC AND SCIENCE SECTORS



Boosting Hobart's Antarctic and Science Sectors, and the City's status as the premier gateway to Antarctica and the Southern Ocean, including through investment in Antarctic and science infrastructure.



The vision

One of the jewels in the crown of Hobart's economy is our position as one of the five gateways to the Antarctic and Southern Ocean. Exploration, innovation and science are in our blood. Research, knowledge leadership, and education will continue to be major growth areas for our city in the years ahead.

The sector currently supports 950 jobs and adds around \$183m to the State's economy each year and is underpinned by our port infrastructure, home to the state-of-the-art icebreaker RSV Nuyina, as well as our specialist and world leading

research Institute for Marine and Antarctic Studies (IMAS).

This industry is a rigorous and diverse scientific sector, with specialisations in climate change science, ecology and biodiversity, oceans, ocean-earth systems and Antarctic Governance.

The City of Hobart is committed to maximising our Antarctic sectors' advantages, values, and strengths and showcasing our Antarctic Gateway as a centre of Antarctic excellence.

The ask

Call on the Australian Government to:

- Invest in Antarctic and science infrastructure to strengthen Hobart's capacity as a premier gateway to the Antarctic and Southern Ocean and future proof the logistical capability of the Port of Hobart, including an upgrade of the Macquarie Wharf precinct, which is an essential element to the Antarctic and Science Precinct.

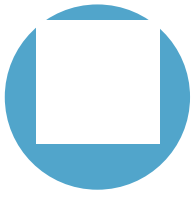
- Work with institutions, research and all levels of government to develop a skilled workforce.

The City will:

- Work with the Tasmanian Government to leverage our Antarctic gateway status to ensure key organisations have their quarters in our City and who bring those conferences, delegations and diplomats into the city to discuss critical issues on the protection and future management of Antarctica.



CLIMATE ACTION



Seeking an urgent acceleration of climate action and investment at a state and national level, to fund innovative, local programs to help the City undertake climate change mitigation and increase the City's resilience to a changing climate.



The vision

As a small island capital city, the City of Hobart is keen for genuine collaboration and partnership in climate action with the Tasmanian and Australian Governments to allow our communities and island home to thrive.

Hobart has led on climate change for more than two decades. We recognised early that action was needed to provide for the health, safety and welfare of the community which is the core function of local government.

The City of Hobart is developing a new 2030 Climate Strategy to enable an evidence-based and integrated response to climate change in collaboration with the community.

Recognising that action on climate change is a shared responsibility between all levels of government, communities and the private sector, the City of Hobart is committed to finding practical and effective ways to address climate change issues within Hobart.

The City of Hobart seeks urgent acceleration of climate action and investment at a state and national level, to fund innovative, local programs to help the City undertake climate change mitigation and increase the City's resilience to a changing climate.

The City of Hobart will seek to work with all levels of government to ensure electrification and retrofitting of households and businesses across Greater Hobart.

The ask

Call on the Tasmanian Government to:

- Subsidise to retrofit low to medium income households to be electrified and thermally efficient.

\$30 million for three years

Call on the Australian and Tasmanian Government to:

- Provide funding to the City of Hobart to be a retrofit hub for Greater Hobart to support households and businesses to access trusted service providers, funding and support for electrification and retrofits.

\$1 million for three years

Call on the Federal Government to:

- Invest in local government across Australia to help us better prepare for flooding, bushfire extreme temperature and winds.

**\$250 million per year for four years
(as per ALGA)**

- Invest a further \$300 million over three years across Australia to build on the Community Energy Upgrade Fund to support emissions reduction programs such as City Switch.
**\$100 million per year for three years.
(building on existing Community Energy Fund)**
- Establish an effective partnership between local, state and the federal government to deliver an Accord defining shared objectives for strengthening climate mitigation, adaptation, and resilience across all tiers of government.



COMMUNITY SPORTS FACILITIES



Investing in community-based sport facilities in the City that maximise the value of the proposed government investments in new sports infrastructure.



The vision

The City of Hobart recognises that sport and recreation is a significant contributor to the economy and also provides many health and social benefits, building on Hobart's lifestyle attributes.

We recognise these benefits by providing and facilitating access to a variety of sport, recreation and leisure opportunities across Hobart, importantly ensuring the facilities are the starting block for participation in sport as well as helping people to maintain active and healthy lifestyles.

The City of Hobart currently owns and operates 19 outdoor sports grounds, and 34 recreational leased facilities. With over 120 sporting clubs accessing these facilities, there is an ever increasing demand for facilities that support non structured recreational and the casualisation of sport.

New or improved facilities will keep our community clubs and organisations sustainable by helping them attract and retain members both now and into the future.

As we grow, new opportunities and challenges will continue to emerge. The City of Hobart is committed to addressing the growing need for more community sporting facilities across the Hobart municipality. Through ongoing engagement with our communities, stakeholders and government we seek to implement initiatives that create new opportunities and reduce the barriers to participation, inclusion and engagement.

With the proposed Macquarie Point Urban Renewal project, with a multi-purpose stadium at its core, it is imperative that community infrastructure is boosted so community sport can thrive. The level of investment in a stadium should work to foster grassroots sports, whilst creating sustainable sporting infrastructure for the wider sections of the community.

A coordinated and collaborate cross-government approach to both community-based sport facilities and new sports infrastructure is required, to ensure that duplication is minimised, returns on investment are maximised, and opportunities to share resources are created.



The ask

Call on the Australian and Tasmanian Government to:

- Provide additional funding towards the Doone Kennedy Hobart Aquatic Centre new warm water pool and wellness centre project, which will deliver measurable health benefits for Tasmanians, particularly those of older people, people with disabilities or injuries.
\$14 million

Call on the Tasmanian Government to:

- Provide funding towards the Cornelian Bay Sporting Pavilion /Community Facility, and associated works.
\$8 million

- Provide funding towards the construction of a basketball facility at Rugby Park.
\$20 million
- Implementation of the New Town Sporting Precinct Infrastructure Plan.
\$55 million
- Invest in funding towards the implementation of the South Hobart Oval and Park Masterplan.
\$6.2 million
- Provide funding towards the Wellesley Changeroom Upgrade and Extension.
\$1.2 million

VISITOR DESTINATION AND GATEWAY



Unlocking the full potential of Hobart as a visitor destination and gateway, through investment in key sites and partnering with the City and local industry to develop a City-to-State Visitor Gateway Strategy.



The vision

Hobart can continue to be a thriving visitor destination that showcases its unique attributes while contributing to the local economy, fostering community engagement, and maintaining the city's environmental and cultural integrity.

Tasmania has long been seen by the world as a place of environmental diversity and natural beauty. More recently, our island has also gained global attention for its unique cultural and culinary offerings, the richness of our people and communities, and the enviable quality of life enjoyed by those who live here.

As our state's capital city, Hobart is at the centre of what makes Tasmania special, and is a thriving home for the best that our island has to offer. In this place, you can experience pristine

mountains, forests and waterways; engage with world-class art and one of the oldest continuing cultures on earth; and be enveloped in the warmth and openness of friendly locals. This is also an open, attractive, and exciting place to build ideas, invest, and do business. We pride ourselves on being a city that drives innovation, sparks creativity, fosters collaboration, and welcomes difference.

Hobart's strengths are formidable. With a strong foundation in place, Hobart's visitor economy enters an exciting period of growth and prosperity.

The City of Hobart wants to work in partnership with our tourism industry and governments to realise the many exceptional opportunities before us.

The ask

Call on the Tasmanian Government to:

- Provide funding towards the development of the City to State Visitor Gateway Experience Strategy that will consider current and emerging issues and opportunities to enhance and improve the visitor experience to Hobart and surrounds.

Estimated cost \$250,000

- Investment towards the provision of digital directional signage throughout Hobart's working port to support our visitors to orient themselves more readily and understand and engage with what the broader city has to offer in terms of unique retail and Tasmanian food and beverages offerings.

Estimated Cost \$500,000

Call on both the Tasmanian and Australian Governments to:

- Invest in key visitor infrastructure at kunanyi/Mt Wellington to improve the experience for both locals and visitors, noting 400,000 people visit this site annually, including:

Master plan to allow for integrated approach to planning and management of kunanyi / Mount Wellington	\$300,000
Electronic sign to provide safety information	\$350,000
Wellington Park entry roundabout	\$900,000
Pinnacle Road guard rail – stage 3 & Springs to Bracken Lane	\$9,000,000
Pinnacle toilet	\$800,000
Pinnacle – boardwalk replacement	\$1,000,000
Springs – services (power & drinking water)	\$1,000,000
Springs – new toilets & surrounding infrastructure	\$1,000,000
Upgrade & extend Pipeline Track	\$1,050,000
The provision of contemporary safe visitor facilities including parking and access solutions that manage the capacity constraints increasingly experienced on kunanyi/Mt Wellington eg Hall Saddle or alternative.	\$20,000,000



TRANSPORT OPTIONS



Diversifying transport options through investment in transport infrastructure aimed at enhancing the City's mobility and improving connectivity.



The vision

The City is entering a critical period of change, with continuing population growth and major projects in the central city area signalling additional pressures and opportunities for the City's movement network.

To make the most of our infrastructure investment and to relieve traffic congestion, it is imperative that we improve public transport by making it a faster, more efficient and more attractive choice for Tasmanians.

The community acknowledge that transport can be a problem and we need improvements. This includes fewer cars on the road, real public transport options for people travelling to and around the city and more support for people walking and cycling. Safety is important.

In order to achieve those outcomes we need a well-connected pedestrian and cycle network.

We need high-quality, accessible streetscapes, and neighbourhoods where the traffic is calm and people are encouraged to choose active travel, regardless of age or ability. We need public transport that is reliable, affordable and connected, and supported by waiting facilities and park and ride. This requires an investment in the public transport system to achieve modal shift across Greater Hobart.

Our transport network sits within a complex legislative, regulatory, policy and funding environment across local, state and federal governments. The City of Hobart will continue its collaborations with other local councils including through the Greater Hobart Councils Partnership, the Tasmanian Government, the Australian Government, and other key stakeholder bodies in Tasmania.

The ask

Call on the Tasmanian Government to:

- Fund the ongoing operations of the ferry network to the additional priority locations.
- Commit to an annual funding program to deliver the Greater Hobart Commuter Cycling Network.
\$5 million per annum
- Fund upgrades to bicycle facilities, including bicycle lanes and sections of separated cycleways at Augusta Road, Lenah Valley and upper Elizabeth Street
\$5.5 million approx
- Funding towards streetscape upgrade Collins Street – Molle to Elizabeth.
\$4 million
- Funding towards the construction of a path at Stainforth Court, providing a linkage to Intercity Cycleway.
\$1.5 million approx
- Funding towards a coordinated network of Disability Standards for Accessible Public Transport (DSAPT) compliant bus shelters in Greater Hobart.
\$8 million
- Funding towards local walking and micro mobility network upgrades that would support the bus rapid transit facilities in Hobart, including:
 - Station design and build at New Town (Bell Street/ Cornelian Bay/ Hockey Centre) Includes investment in surrounding pedestrian infrastructure, wayfinding etc to create walkable station precinct.
\$6 million approx
- Support for additional maintenance funding on Local Government roads on Bus Rapid Transit routes.
\$5 million over 10 years

Disclaimer: Costings and Financial Estimates

The financial figures and costings presented in this advocacy document are provided for informational purposes only and are based on the best available data at the time of preparation. While every effort has been made to ensure the accuracy and reliability of the information, it is important to

note that cost projections are subject to change due to various factors, including but not limited to, market conditions, and assumptions.

Should funding be secured, additional work will be undertaken to determine an accurate cost.

Hobart Town Hall,
Macquarie Street,
Hobart, Tasmania 7000
T 03 6238 2711
E coh@hobartcity.com.au
W hobartcity.com.au